

SAC Minutes for Friday October 6, 2023

Call to Order-8:25 a.m.

Approval of September 2023 Minutes (sent electronically)

- Motion to approve: Ms. Walker
- Second Motion: Mr. La Rosa
- All approve

SAC Composition and Vote- Mrs. Keery

Our SAC membership has two components that needs to be represented:

1. School demographic- we meet all our school demographic criteria with the exception of male to female ratio; otherwise, we are in the correct percentage points.
2. Required representatives that we need to have as a part of SAC and presentation of the slate nomination from PTO:
 - BTU Steward-Suzanne Gagne
 - PTO Rep-Deanna Russo
 - I Zone Rep- Amrit Mann
 - Business Rep-Michael Goldberg
 - SAF Designees- Carly Walker
 - ESOL Rep- (OPEN)
 - ESE Rep- (OPEN)
 - Gifted Rep- Chantelle Rosenthal
 - Non-Instructional Rep-Latanya Fondren

Approval of SAC Representatives (moved to next meeting)

- Motion to approve: n/a
- Second Motion: n/a
- All approve

Review of SIP and Approval: Mrs. Keery

The School Improvement Plan is the document that guides SAC. It is fluid and can be updated throughout the year. Overall, the idea is to address various areas to help fulfill the needs our school and stakeholders. Available to view online. View SIP here: https://www.browardschools.com/Page/49968?school_number=3871

Several parts to the SIP:

1. High Quality Instruction
 - a. This section reviews our school report card “A” school
 - b. Early Warning Indicators-helps our staff/faculty to identify students and provide interventions by the school to improve academic performance
 - c. Literacy Goal/Reading Plan
 - i. Members include Ms. Hamm, Ms. Nast, ELA department head, Reading teachers and ELA PLC facilitators
 - ii. Goal is to continually improve our reading scores as scored from the FAST tests
2. Safe and Supportive Environment
 - a. Professional Learning Communities (PLC)
 - i. These are teacher led groups between grade levels and subject areas

- ii. Meet weekly on Tuesdays
 - iii. Opportunity to plan, review student data, remediation, and enrichment
- b. Multi-Tiered Support System and Response to Intervention
 - i. Meet weekly to address the needs of students in need of extra support
 - 1. Includes all school administration, guidance, ESE Specialist, School Psychologist, LSW counselor, Literacy Coach
- c. Life Skills and Wellness Plan (Previously known as SEL)
 - i. This describes the various ways our school meets the social emotional needs of our students and to make our school more welcoming for all students
 - 1. LSW team meets regularly to meet the LSW needs of our students and stakeholders, managing one's emotions, behavior
 - 2. Implement various programs such as:
 - a. Conscious Discipline
 - b. Start with Hello/Peace Week
 - c. Daily LSW Lessons
 - d. Second Step
 - e. Character Education
 - f. Student clubs: Equality club, Kindness Matters, Best Buddies
 - g. Parent Nights
- d. Schoolwide Positive Behavior Plan
 - i. Plan is created to reward positive behavior while at school
 - ii. Team of people: Admin, BTU rep, Parent/Community member, teacher
 - iii. Identify top 5 behavior incidents
 - 1. Unruly Behavior
 - 2. Disobedience/Insubordination
 - 3. Disruptive/Unruly Play
 - 4. Insulting Language
 - 5. Bus Violations
 - iv. Create School-wide expectation
 - 1. Respect for Self and others
 - 2. Responsible
 - 3. Kindness
 - 4. School Pride
 - v. Overall the idea is to increase the positive behaviors around school
- e. Attendance Plan
 - i. Ensures the school properly monitors the attendance of all our students and implements various intervention to ensure students attend school every day.
- f. Equity Plan
 - i. Fair access to advance courses, facilities, activities, technology, and textbooks to ensure all students are provided with the opportunities and tools to be successful and experience a well-rounded education
- g. SAC/SAF documentation
 - i. Meeting minutes and SAC Composition Report
- h. Family and Community Engagement Plan
 - i. families to feel welcomed, valued, and respected by program staff; two-way communication and relationship building with families are adapted to meet changing family and community circumstances; opportunities are provided for family support and development through the family partnership process

- ii. School works to create various activities and programs to engage our stakeholders both internally and externally

Approval of SIP Plan

- Motion to approve: Ms. Fondren
- Second Motion: Ms. Greenwood
- All approve

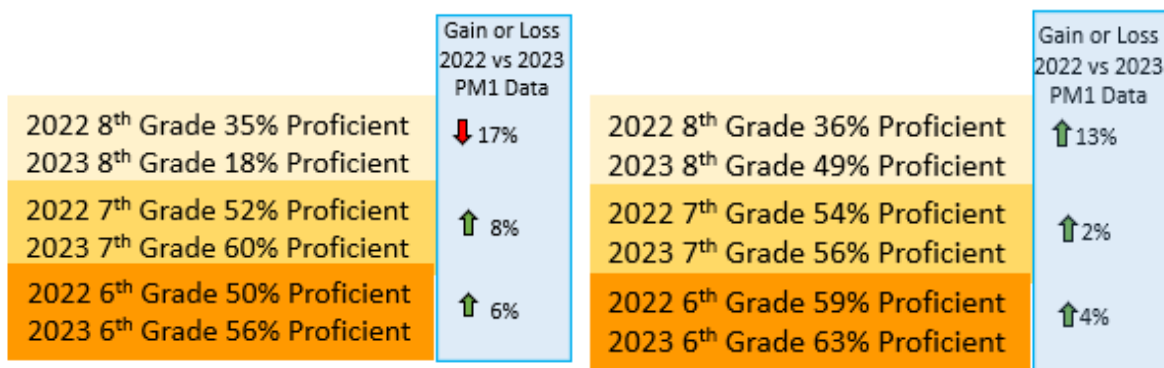
Current Budget-Accountability Funds: \$ 17,878.65 (as of May 2023)

School Update-Mr. Bianchi

Positives

- Teacher of the Year- Fernanda Johnson and School Related Employee of the Year- Idi Vance
- Sports Updates
 - Soccer teams- both girls and boys won their divisions and are playing in the first round of playoffs.
 - Cross Country- The girls and boys Cross Country finished 1st in their first meet.
- Debate 16 student received medals and were declared winners.
- Cambridge Program at MSD and Westglades (more info at next meeting)
- Book Fair- Selling extremely well. PTO did an amazing job on the theme.
- PTO National Ice Cream Cone Day was awesome and greatly appreciated by staff.

FAST PM1 Results



| Grade | WMS ELA | Falcon ELA | WMS Math | Falcon Math |
|---------|---------|------------|----------|-------------|
| Overall | 55% | 56% | 49% | 49% |

- Encourage your children to try their best. The test gives us data on instruction and remediation strategies for students.

Harvest Drive

1. The Harvest Drive begins Monday, 10/9 and ends on 10/27. Ms. Mcguire has been working with our students to spread the word. We have carline drop off from 10/25-10/27. We are doing our 5 Minutes of Dough on 10/18 and the class that donates the most money will get a donut party. Adopt a family opportunity as well.

School Environmental Safety Incident Reporting (SESIR)

- No incidents in August 2023, view report at <https://www.browardschools.com/Page/38107>

Upcoming dates

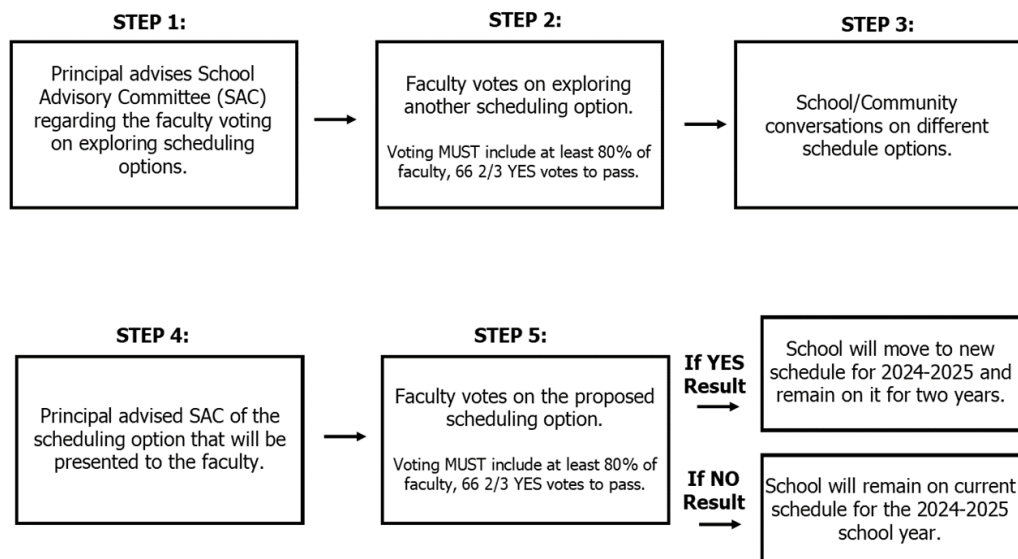
| | | | |
|-------------|--|-------------|-----------------------------------|
| 10/3 | Interim Reports | 10/25 | Basketball Home |
| 10/4 | Think B4U Post Parent Night | 10/25-10/27 | Harvest Drive Car Line Collection |
| 10/4 | Cross Country Meet | 10/27 | Basketball Home |
| 10/6 | SAC Meeting @ 8:15 | 10/27 | SGA Talent Show |
| 10/10 | Fall Picture Make-ups | 11/1 | Fire Drill @ 2:20PM |
| 10/10 | Cross Country Meet | 11/3 | Basketball Home |
| 10/10 | Band & Orchestra Concert @ 6 | 11/3 | SAC/SAF/PTO |
| 10/12 | Wolf Fest 4-6PM Click here to purchase | 11/6 | Basketball Home |
| 10/17 | Fire Drill @ 9:50 | 11/7 | No School |
| 10/19 | Basketball Home | 11/8 | Lockdown @ 10:30 |
| 10/19 | Cross Country Meet | 11/9 | Basketball Home |
| 10/23-10/27 | Red Ribbon Week | 11/10 | No School |
| 10/23 | Early Release | 11/13 | Basketball Home |
| 10/24 | Teacher Planning | 11/20-11/24 | No School |

New Business:

- SGA Talent Show Oct. 27, tickets on sale at GoFan.co



- Exploring Bell Schedules- more information share at next meeting



Parent Concerns:

- GEM Math and Cambridge clarification, can they do both?
 - more information at next meeting
- Support for 7th Grade FAST Math 3 or higher going into Algebra in 8th Grade
 - Morning Math help from teacher coming soon

Next Meeting:

- November 3, 2023 at 8:20am in Media Center
- SAC/SAF Combined, PTO to follow at 9:30

Adjourned at 9:02am