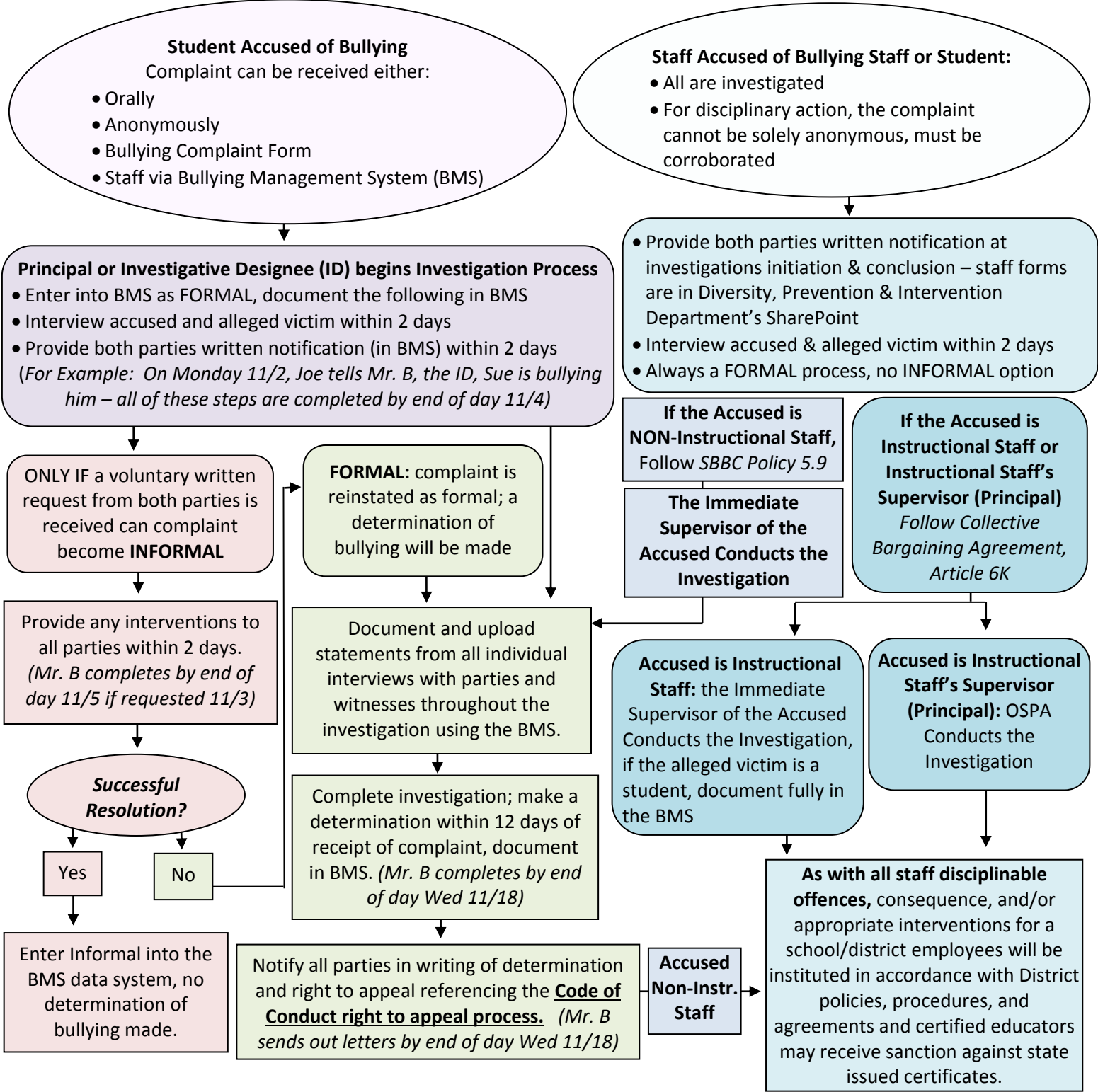


## BULLYING INVESTIGATIVE PROCEDURES FLOW CHART



**Please Note:** No matter what the determination, referring staff and the ID will monitor and follow up with all parties.

- “Days” refers to school days for student accused, work days for staff accused; “Within \_\_\_ days” refers to days from the receipt of initial complaint
- BMS = Bullying Management System, ID = Investigative Designee, OSPA = Office of School Performance and Accountability
- Employees wishing to file a complaint of sexual harassment, discrimination and/or bullying based on a protected category listed in Federal and State Laws, Local Regulations and/or School Board Policy 4001.1, are to be referred to the Department of EEO/ADA Compliance.