



THE SCHOOL BOARD OF BROWARD COUNTY, FLORIDA
2021-2022 ORGANIZATIONAL CHART

Board Approved: 05/18/21
Pgs 10, 13, & 14 Revised: 6/15/21



**THE SCHOOL BOARD OF BROWARD COUNTY, FLORIDA
2021-2022 ORGANIZATIONAL CHART**

| | |
|--------------------------------------------------------------------------------------------------------------------------------------------------------------------|--------------|
| School Board Appointed Committees & Public Stakeholders | 1 |
| Superintendent of Schools | 2 |
| General Counsel | 3 |
| School Performance & Accountability | 4 |
| Academics | 5-7 |
| Learning & Development Support | 5 |
| Exceptional Student Learning Support | 6 |
| Student Learning | 7 |
| Student Support Initiatives & Recovery | 8 |
| Auditor | 9 |
| Facilities | 10 |
| Financial Management | 11 |
| Human Resources & Equity | 12 |
| Information Technology | 13-14 |
| Communications | 15 |
| Chief of Staff | 16 |
| Safety, Security & Emergency Preparedness | 17 |
| Strategy & Operations | 18-19 |
| Demographics & Enrollment Planning, Grants Administration, Strategic Implementation & Accountability | 18 |
| Food & Nutrition Services, Procurement & Warehousing Services, Supplier Diversity & Outreach, Student Transportation & Fleet Services | 19 |



**THE SCHOOL BOARD OF BROWARD COUNTY, FL
2021-2022 ORGANIZATIONAL CHART**

**SCHOOL BOARD APPOINTED COMMITTEES &
PUBLIC STAKEHOLDERS**

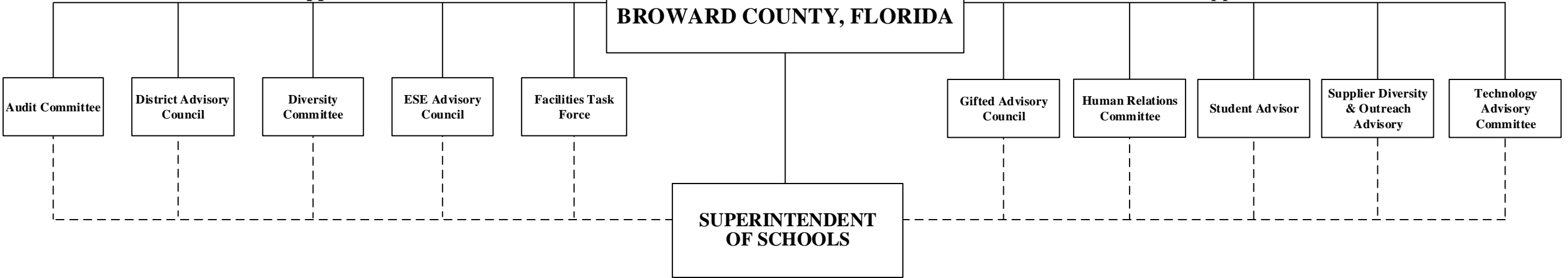
Funding:
Funding from sources other than General Funds
C Capital **FS** Food Service **Gr** Grant
G General **R** Referendum

**BROWARD COUNTY
COMMUNITY**

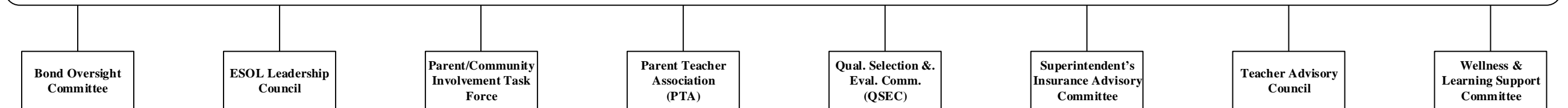
**THE SCHOOL BOARD OF
BROWARD COUNTY, FLORIDA**

School Board Appointed Committees

School Board Appointed Committees



PUBLIC STAKEHOLDERS



Funding from sources other than General Funds

Funding:
C Capital **FS** Food Service **Gr** Grant
G General **R** Referendum



**THE SCHOOL BOARD OF BROWARD COUNTY, FL
 2021-2022 ORGANIZATIONAL CHART**

SUPERINTENDENT

**BROWARD COUNTY
 COMMUNITY**

**THE SCHOOL BOARD OF
 BROWARD COUNTY, FLORIDA**

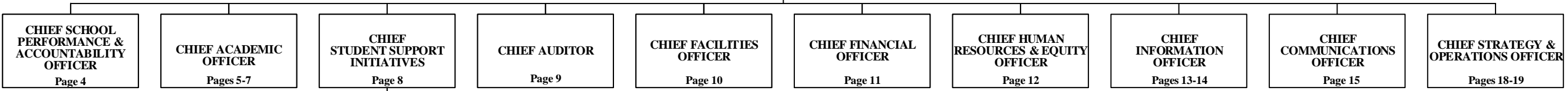


CHIEF OF STAFF ^(S)
 Page 16

DIRECTOR ^(D)
Legislative Affairs

COORDINATOR ⁽²⁷⁾
Governmental Affairs

CHIEF ^(S)
SAFETY & SECURITY OFFICER
 Page 17



Recovery Team

Funding from sources other than General Funds

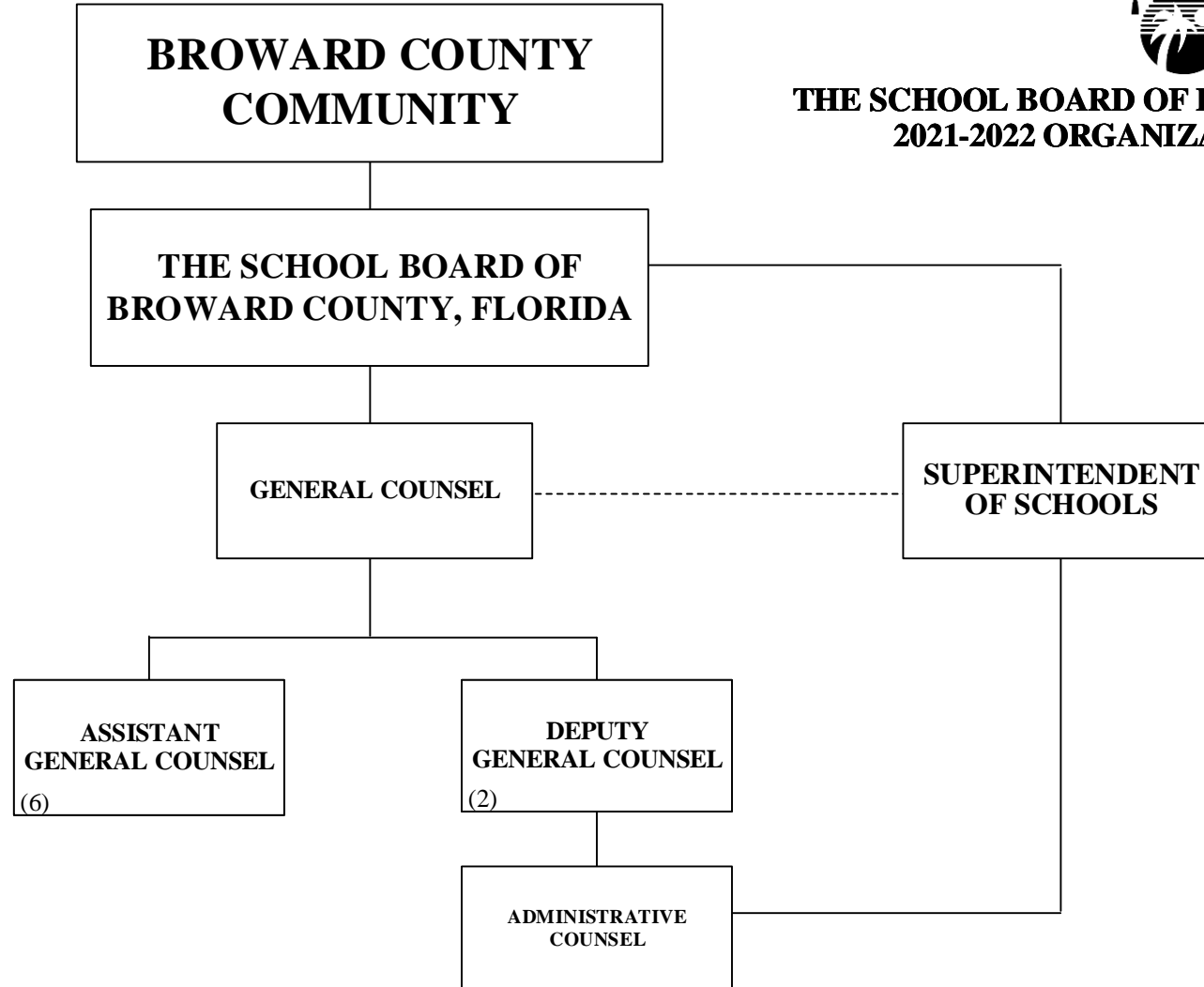
Funding:

C Capital **FS** Food Service **Gr** Grant
G General **R** Referendum

GENERAL COUNSEL



**THE SCHOOL BOARD OF BROWARD COUNTY, FL
2021-2022 ORGANIZATIONAL CHART**





SCHOOL PERFORMANCE & ACCOUNTABILITY OSPA

THE SCHOOL BOARD OF BROWARD COUNTY, FL 2021-2022 ORGANIZATIONAL CHART

Funding from sources other than General Funds

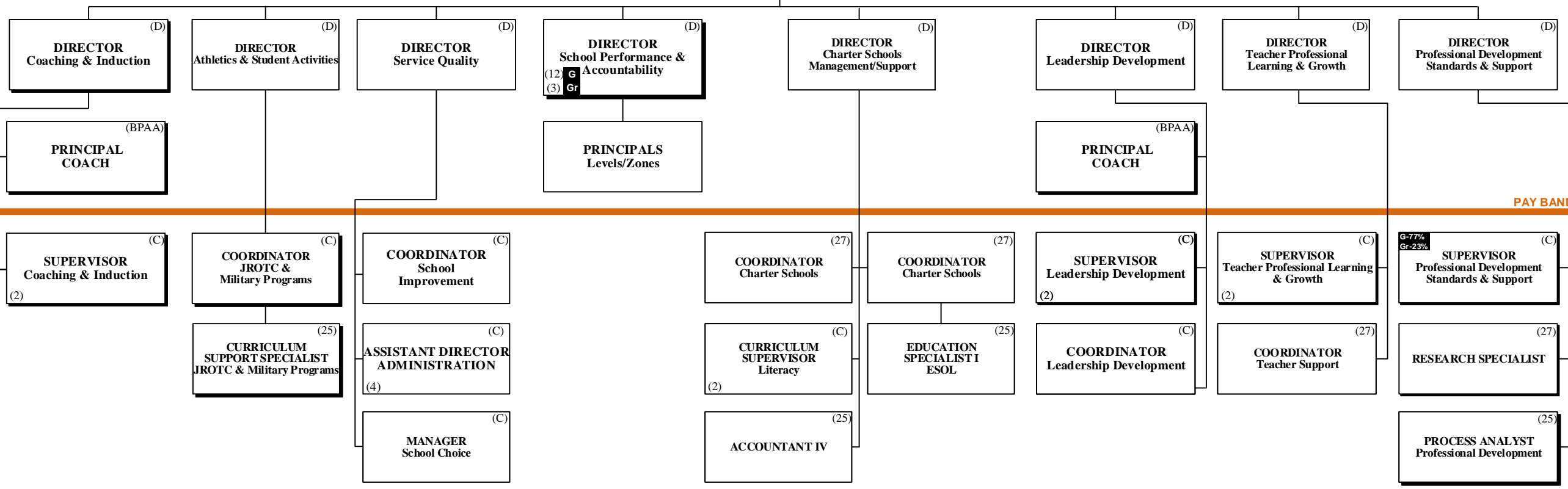
Funding:
C Capital **FS** Food Service **Gr** Grant
G General **R** Referendum

THE SCHOOL BOARD OF BROWARD COUNTY, FLORIDA

SUPERINTENDENT OF SCHOOLS

CHIEF SCHOOL PERFORMANCE & ACCOUNTABILITY OFFICER (S)

PAY BANDS 'S' & 'E'



PAY BAND 'D'

PAY BANDS 'C' & 'B'

ACADEMICS LEARNING & DEVELOPMENT SUPPORT



THE SCHOOL BOARD OF BROWARD COUNTY, FL 2021-2022 ORGANIZATIONAL CHART

Funding:
C Capital FS Food Service Gr Grant
G General R Referendum

THE SCHOOL BOARD OF BROWARD COUNTY, FLORIDA

SUPERINTENDENT OF SCHOOLS

CHIEF ACADEMIC OFFICER ^(S)

EXECUTIVE DIRECTOR ^(E)
Early Learning & Language Acquisition

PAY BANDS 'S' & 'E'

**G-10%
Gr-90%** ^(D)
DIRECTOR
Head Start/Early Intervention

^(D)
DIRECTOR
Literacy

^(D)
DIRECTOR
Student Assessment & Research

**G-10%
Gr-90%** ^(D)
DIRECTOR
Title I, Migrant & Special Programs

^(D)
DIRECTOR
Innovative Programs Design/Support

PAY BAND 'D'

^(C)
CURRICULUM SUPERVISOR
Head Start/Early Head Start

^(C)
CURRICULUM SUPERVISOR
VPK Programs

^(C)
CURRICULUM SUPERVISOR
School Readiness

^(C)
CURRICULUM SUPERVISOR
School Readiness

⁽²⁷⁾
RESEARCH SPECIALIST

⁽²⁵⁾
SPECIALIST
Title I
₍₅₎

^(D)
ASSISTANT DIRECTOR
School/Venture Design Support

⁽²⁵⁾
SPECIALIST
Innovative Programs

^(B)
SPECIALIST
Head Start Family Services

^(B)
SPECIALIST
Head Start/Early Head Start

^(C)
CURRICULUM SUPERVISOR
School Readiness

⁽²⁷⁾
RESEARCH SPECIALIST
₍₂₎

⁽²⁵⁾
SPECIALIST
(ESEA Title I)
Basic Schoolwide Project & Program Improvement

^(C)
SPECIALIST
Account Client Support

⁽²⁵⁾
SPECIALIST
Testing
₍₂₎

⁽²⁵⁾
GRANT ADMINISTRATOR
SPECIALIST

PAY BANDS 'C' & 'B'

ACADEMICS EXCEPTIONAL STUDENT LEARNING SUPPORT



**THE SCHOOL BOARD OF BROWARD COUNTY, FL
2021-2022 ORGANIZATIONAL CHART**

Funding from sources other than General Funds

Funding:
C Capital **FS** Food Service **Gr** Grant
G General **R** Referendum

THE SCHOOL BOARD OF BROWARD COUNTY, FLORIDA

SUPERINTENDENT OF SCHOOLS

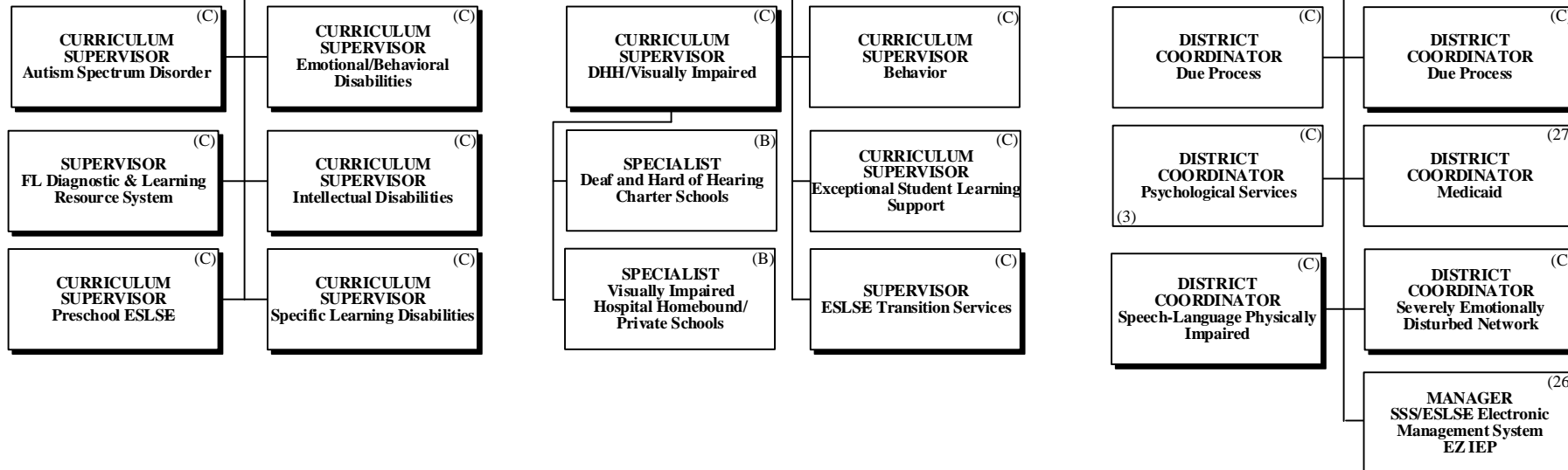
CHIEF ACADEMIC OFFICER ^(S)

EXECUTIVE DIRECTOR
Exceptional Student Learning Support ^(E)

PAY BANDS 'S' & 'E'

DIRECTOR ^(D) Exceptional Student Learning Support (Pre-K/Elementary)
 DIRECTOR ^(D) Exceptional Student Learning Support (Secondary)
 DIRECTOR ^(D) Exceptional Student Learning Support Services

PAY BAND 'D'



PAY BANDS 'C' & 'B'

ACADEMICS STUDENT LEARNING



THE SCHOOL BOARD OF BROWARD
COUNTY, FLORIDA

**THE SCHOOL BOARD OF BROWARD COUNTY, FL
2021-2022 ORGANIZATIONAL CHART**

Funding:
Funding from sources other than General Funds
C Capital **FS** Food Service **Gr** Grant
G General **R** Referendum

SUPERINTENDENT OF SCHOOLS

CHIEF
ACADEMIC
OFFICER ^(S)

PAY BANDS 'S' & 'E'

DIRECTOR ^(D)
Elementary Learning

DIRECTOR ^(D)
Secondary Learning

DIRECTOR ^(D)
Innovative Learning

DIRECTOR ^(D)
Applied Learning

DIRECTOR ^(D)
Career, Technical, Adult,
Community Education

DIRECTOR ^(D)
Bilingual/ESOL

PAY BAND 'D'

CURRICULUM
SUPERVISOR ^(C)
Language Arts
(2)

CURRICULUM
SUPERVISOR ^(C)
Language Arts
(2)

CURRICULUM
SUPERVISOR ^(C)
Library Media

CURRICULUM
SUPERVISOR ^(C)
Physical Education &
Educational Programs

CURRICULUM
SUPERVISOR ^(C)
Music & Performing Arts

CURRICULUM
SUPERVISOR ^(C)
Business Technology

CURRICULUM
SUPERVISOR ^(C)
Educational Leadership

EDUCATION
SPECIALIST I ⁽²⁵⁾
ESOL
(2)

CURRICULUM
SUPERVISOR ^(C)
Bilingual/ESOL
G-27%
Gr-76%

CURRICULUM
SUPERVISOR ^(C)
Math
(2)

CURRICULUM
SUPERVISOR ^(C)
Math
(2)

CURRICULUM
SUPERVISOR ^(C)
Gifted & Talented

CURRICULUM
SUPERVISOR ^(C)
STEM+C

CURRICULUM
SUPERVISOR ^(C)
Art

CURRICULUM
SUPERVISOR ^(C)
Health Science

CURRICULUM
SUPERVISOR ^(C)
Family & Consumer Science

EDUCATION
SPECIALIST I ⁽²⁵⁾
Dual Language/World
Language

CURRICULUM
SUPERVISOR ^(C)
World Languages

CURRICULUM
SUPERVISOR ^(C)
Science

CURRICULUM
SUPERVISOR ^(C)
Science

PROJECT
MANAGER ⁽²⁷⁾
Technology & Instruction

CURRICULUM
SUPERVISOR ^(C)
Humanities

CURRICULUM
SUPERVISOR ^(C)
Technical Education/
Agriculture

CURRICULUM
SUPERVISOR ^(C)
Vocational Education
Industrial

SPECIALIST ⁽²⁵⁾
Bilingual Outreach Program

RESEARCH SPECIALIST ⁽²⁷⁾
G-50%
Gr-50%

CURRICULUM
SUPERVISOR ^(C)
Social Studies

CURRICULUM
SUPERVISOR ^(C)
Social Studies

ANALYST ⁽²⁵⁾
Training

ANALYST ⁽²⁵⁾
Instructional & Digital
Material

PAY BANDS 'C' & 'B'

STUDENT SUPPORT INITIATIVES & RECOVERY



THE SCHOOL BOARD OF BROWARD COUNTY, FL 2021-2022 ORGANIZATIONAL CHART

Funding from sources other than General Funds

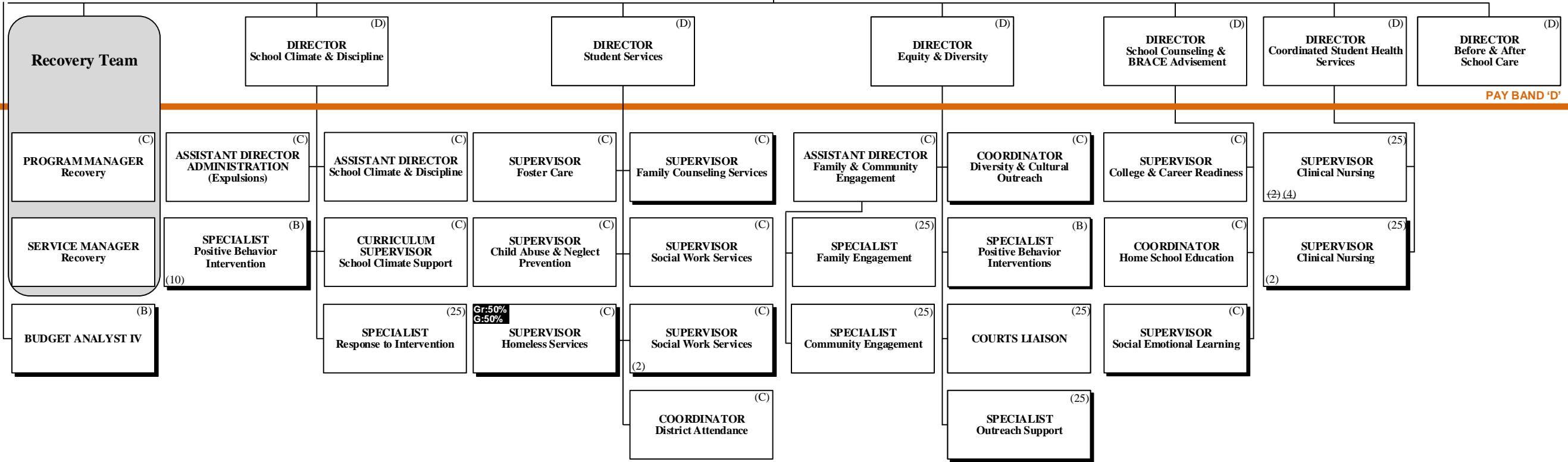
Funding:
C Capital **FS** Food Service **Gr** Grant
G General **R** Referendum

THE SCHOOL BOARD OF
BROWARD COUNTY, FLORIDA

SUPERINTENDENT OF SCHOOLS

CHIEF STUDENT SUPPORT INITIATIVES & RECOVERY (S)

PAY BANDS 'S' & 'E'



PAY BAND 'D'

PAY BANDS 'C' & 'E'

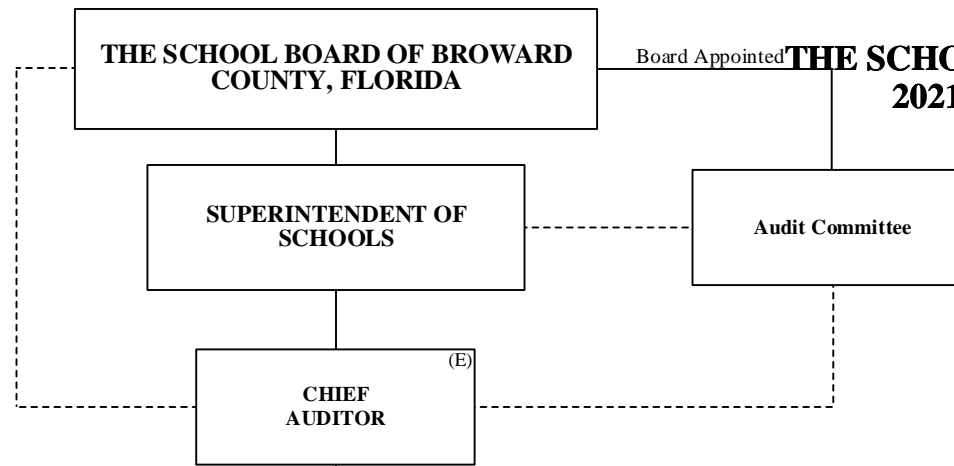


AUDITOR

Funding from sources other than General Funds

Funding:
C Capital **FS** Food Service **Gr** Grant
G General **R** Referendum

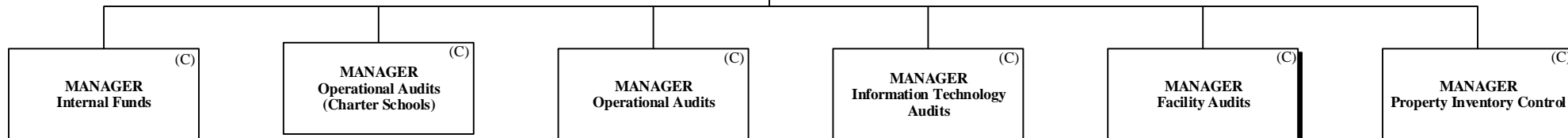
Board Appointed **THE SCHOOL BOARD OF BROWARD COUNTY, FL**
2021-2022 ORGANIZATIONAL CHART



PAY BANDS 'S' & 'E'



PAY BAND 'D'



PAY BANDS 'C' & 'B'

FACILITIES



THE SCHOOL BOARD OF BROWARD COUNTY, FLORIDA

THE SCHOOL BOARD OF BROWARD COUNTY, FL
2021-2022 ORGANIZATIONAL CHART

Funding from sources other than General Funds
Funding:
C Capital **FS** Food Service **Gr** Grant
G General **R** Referendum

SUPERINTENDENT OF SCHOOLS

CHIEF FACILITIES OFFICER (S)

EXECUTIVE DIRECTOR Capital Programs (E)

EXECUTIVE DIRECTOR Physical Plant Operations (E)

PAY BANDS 'S' & 'E'

DIRECTOR Construction (D)

DIRECTOR Program Controls (D)

DIRECTOR Pre-Construction (D)

DIRECTOR Facility Planning & Real Estate (D)

DIRECTOR Physical Plant Operations (D)
 C-70%
 G-30%

PAY BAND 'D'

MANAGER Construction (C)
(2)

MANAGER Database Administration (C)
(27)

MANAGER Mechanical Engineering (C)

MANAGER ADA Accessibility (C)

COORDINATOR Facility Planning & Educational Programming (C)
(27)

PLANNER Growth Management (C)
(27)

MANAGER Custodial/Grounds (C)
 C-55%
 G-45%

MANAGER Facilities Support Services (C)

MANAGER PPO Finance (C)

MANAGER Business Process & Performance Improvement (C)

MANAGER Construction (C)
(2)

MANAGER Architectural Engineering (C)

SPECIALIST ADA Accessibility (C)
(25)

SENIOR PROPERTY COORDINATOR (C)

PLANNER Growth Management Monitoring (C)
(27)

MANAGER Grounds (C)
(26)

SENIOR PROCESS ANALYST (C)

PROJECT MANAGER III (C)
(2)

MANAGER Electrical Engineering (C)

PROJECT MANAGER III (C)
(27)

PROPERTY COORDINATOR (C)
(26)

AREA MANAGER Trades (Zones 1, 2, 3, & District) (C)
(4)
 C-70%
 G-30%

SUPERVISOR Planning & Scheduling (C)
(25)
 C-55%
 G-45%

TRADE SUPERVISOR (C)
(9)

ESMAB PAY BANDS 'C' & 'B'
TSP PAY GRADES 25-28

FINANCIAL MANAGEMENT



THE SCHOOL BOARD OF BROWARD COUNTY, FL 2021-2022 ORGANIZATIONAL CHART

Funding from sources other than General Funds

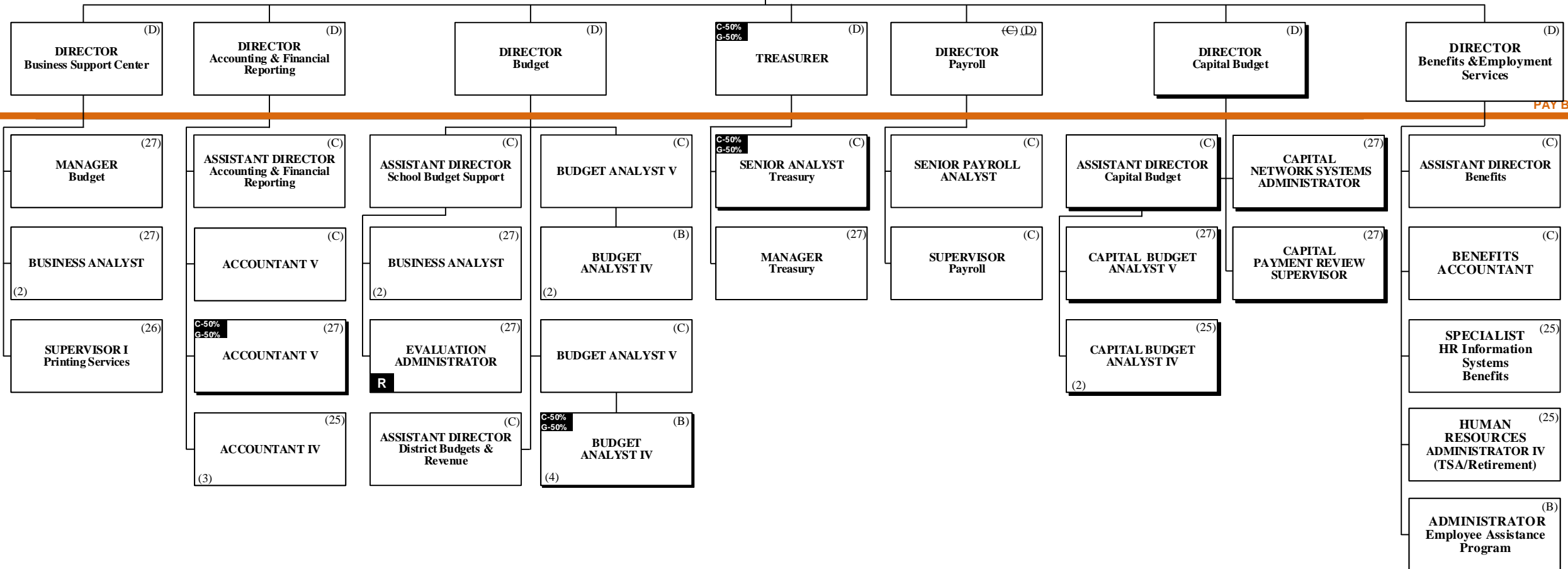
Funding:
C Capital **FS** Food Service **Gr** Grant
G General **R** Referendum

THE SCHOOL BOARD OF BROWARD COUNTY, FLORIDA

SUPERINTENDENT OF SCHOOLS

C-20%
G-80% (S)
CHIEF FINANCIAL OFFICER (CFO)

PAY BANDS 'S' & 'E'



PAY BAND 'D'

ESMAB PAY BANDS 'C' & 'B'
TSP PAY GRADES 25-28

HUMAN RESOURCES & EQUITY

THE SCHOOL BOARD OF BROWARD COUNTY, FLORIDA



THE SCHOOL BOARD OF BROWARD COUNTY, FL 2021-2022 ORGANIZATIONAL CHART

Funding from sources other than General Funds

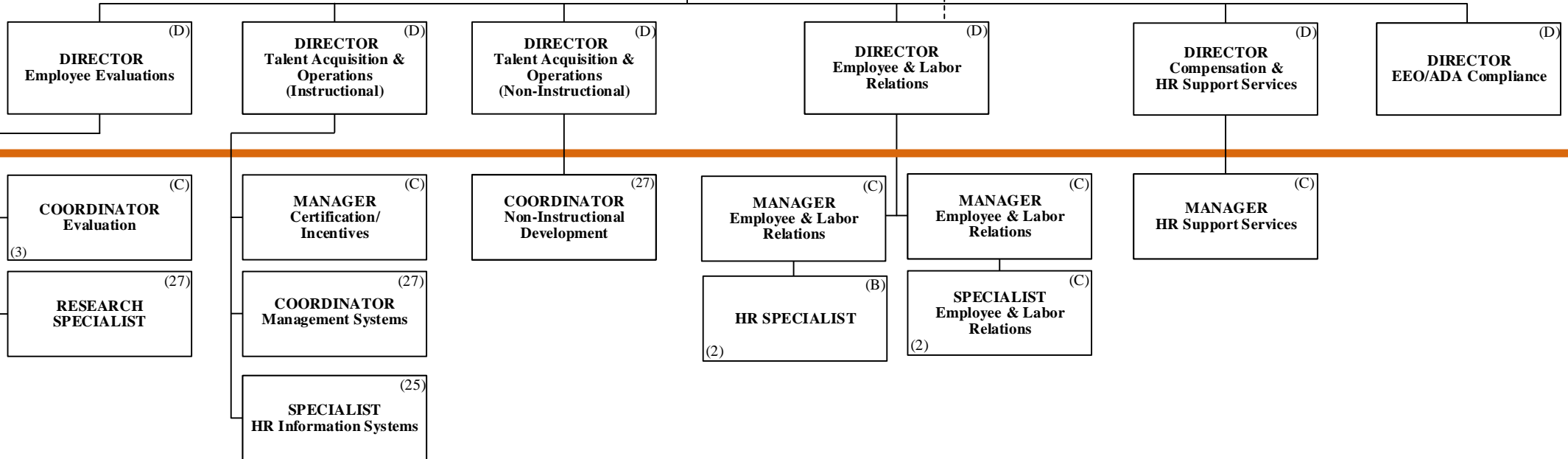
Funding:
C Capital **FS** Food Service **Gr** Grant
G General **R** Referendum

SUPERINTENDENT OF SCHOOLS

CHIEF HUMAN RESOURCES & EQUITY OFFICER (S)

Collective Bargaining

PAY BANDS 'S' & 'E'



PAY BAND 'D'

ESMAB PAY BANDS 'C' & 'B'
TSP/PBA PAY GRADES 25-28

INFORMATION TECHNOLOGY



THE SCHOOL BOARD OF BROWARD COUNTY, FL 2021-2022 ORGANIZATIONAL CHART

Funding from sources other than General Funds

Funding:
C Capital **FS** Food Service **Gr** Grant
G General **R** Referendum

THE SCHOOL BOARD OF BROWARD COUNTY, FLORIDA

SUPERINTENDENT OF SCHOOLS

CHIEF INFORMATION OFFICER (S)

PAY BANDS 'S' & 'E'

DIRECTOR (D)
School Applications

DIRECTOR (D)
Enterprise Applications

DIRECTOR (D)
Information Technology Security

DIRECTOR (D)
Safety Technology

PAY BAND 'D'

SENIOR ANALYST RAD (27)
SYSTEMS ANALYST IV (26) (2)

SYSTEMS ANALYST (27)
SYSTEMS ANALYST IV (26) (2)

BUSINESS SYSTEM MANAGER Finance (27)
 PROCESS ANALYST Budget Planning (25)
 SYSTEMS ANALYST IV (26) (2)
 PROCESS ANALYST Business System Intelligence (25) (2)
 PROCESS ANALYST Funds Management & PBC (25) (2)

BUSINESS SYSTEMS MANAGER Development (27)
 SPECIALIST HR Information Systems (25) (2)
 COORDINATOR Management Systems (27)
 BUSINESS SYSTEM MANAGER Payroll (27)
 PROCESS ANALYST Payroll (25) (2)

ASSISTANT DIRECTOR ERP Technical Services (C)
 BASIS ADMINISTRATOR (27)
 PORTAL ADMINISTRATOR (27)
 PROCESS ANALYST Change Management/ Webmaster (25) (2)

MANAGER Information Security (C)
 CYBER THREAT DEFENDER (26)
 CYBER SECURITY SOFTWARE ENGINEER (26) (2)

MANAGER Information Security (C)
 DIGITAL FORENSIC EXAMINER (26) (2)
 SECURITY ANALYST (26) (2)

SYSTEMS ANALYST IV (26)
 SPECIALIST III Systems Support (26) (2)

SENIOR PROJECT MANAGER (27)

ESMAB PAY BANDS 'C' & 'B'
TSP PAY GRADES 25-28

INFORMATION TECHNOLOGY



THE SCHOOL BOARD OF BROWARD COUNTY, FL 2021-2022 ORGANIZATIONAL CHART

Funding from sources other than General Funds

Funding:
C Capital **FS** Food Service **Gr** Grant
G General **R** Referendum

THE SCHOOL BOARD OF BROWARD COUNTY, FLORIDA

SUPERINTENDENT OF SCHOOLS

CHIEF INFORMATION OFFICER (S)

EXECUTIVE DIRECTOR (E)
IT Customer Service

DIRECTOR (D)
Office of the CIO

SENIOR PROJECT MANAGER (27)
Office of the CIO (2)

SENIOR PROCESS ANALYST (C)

DIRECTOR (D)
Technical Support Services

IT SYSTEMS ARCHITECT (C)

COORDINATOR (26)
District Network

SYSTEMS ENGINEER (26)

MANAGER (C)
Information Technology

ENGINEER II (25)
IT NOC & Maintenance

SYSTEMS ANALYST (27)

SYSTEMS ENGINEER (26)

SYSTEMS ANALYST (27)

SENIOR ANALYST (25)
Telecommunications (2)

SYSTEMS PROGRAMMER (27)

DIRECTOR (D)
Classroom Technology & Desktop Support Services

COORDINATOR (27)
District Technology

SPECIALIST III (26)
Systems Support

DIRECTOR (D)
Computer Operations

PROCESS ANALYST (25)
Change Management

MANAGER (27)
Finance

PAY BANDS 'S' & 'E'

PAY BAND 'D'

Funding from sources other than General Funds

Funding:
C Capital **FS** Food Service **Gr** Grant
G General **R** Referendum



**THE SCHOOL BOARD OF BROWARD COUNTY, FL
 2021-2022 ORGANIZATIONAL CHART**

COMMUNICATIONS

THE SCHOOL BOARD OF BROWARD COUNTY, FLORIDA

SUPERINTENDENT OF SCHOOLS

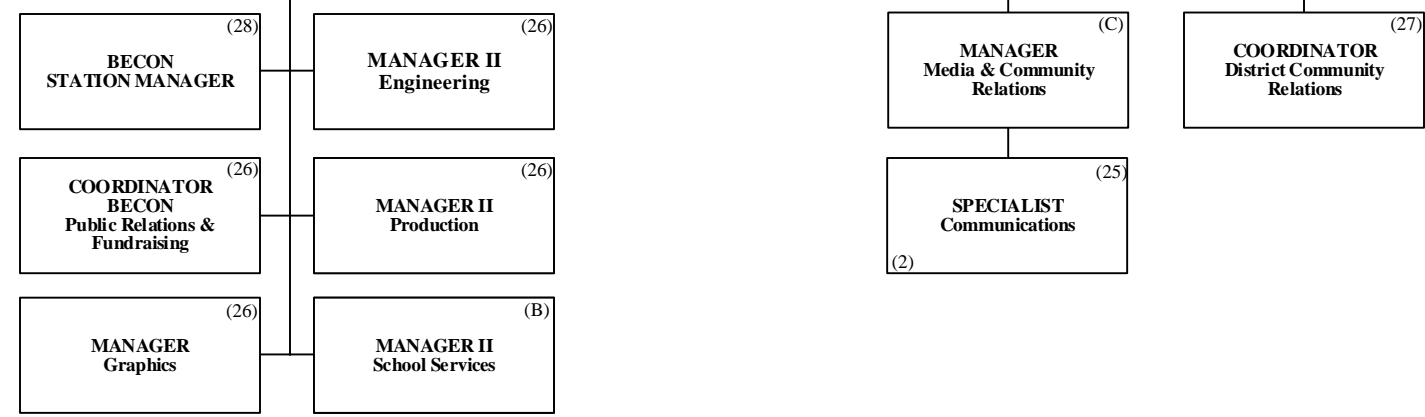
CHIEF COMMUNICATIONS OFFICER (E)

PAY BANDS 'S' & 'E'

DIRECTOR/ GENERAL MANAGER Broward Educational Communication Network (BECON) (D)

DIRECTOR Marketing & Strategic Communications (D)

PAY BAND 'D'



ESMAB PAY BANDS 'C' & 'B'
 TSP PAY GRADES 25-28

CHIEF OF STAFF



THE SCHOOL BOARD OF BROWARD COUNTY, FL 2021-2022 ORGANIZATIONAL CHART

Funding from sources other than General Funds

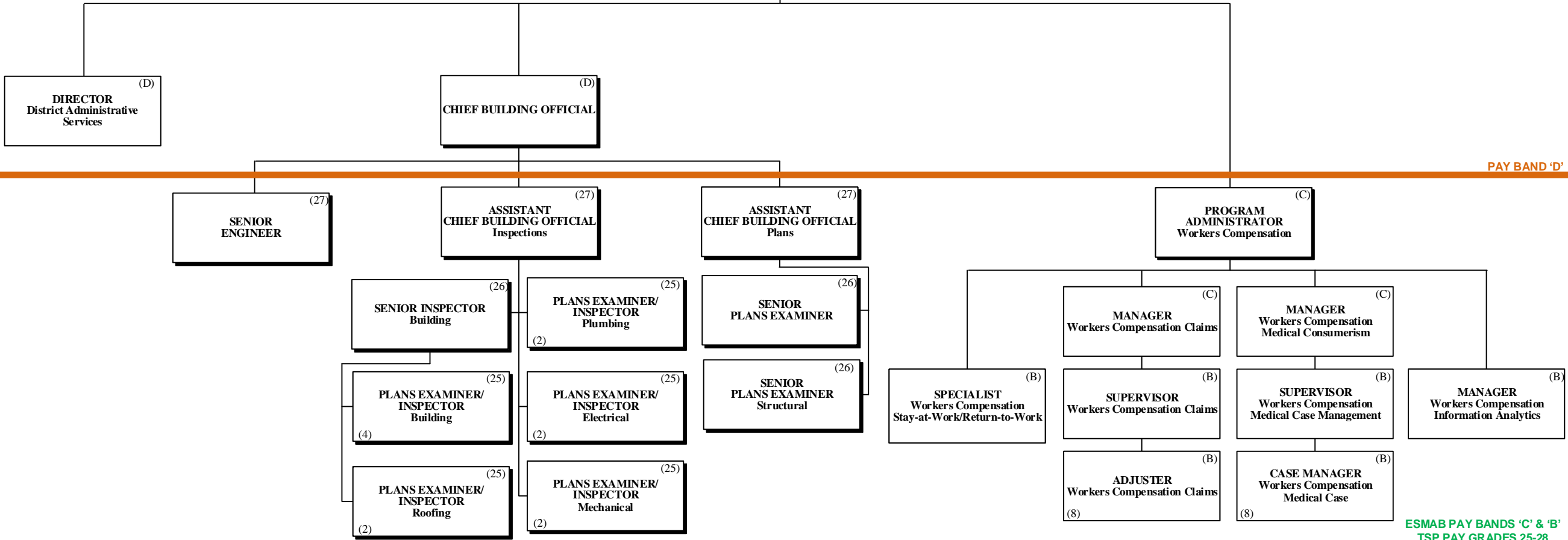
Funding:
C Capital **FS** Food Service **Gr** Grant
G General **R** Referendum

THE SCHOOL BOARD OF BROWARD COUNTY, FLORIDA

SUPERINTENDENT OF SCHOOLS

CHIEF OF STAFF (S)

PAY BANDS 'S' & 'E'



SAFETY, SECURITY & EMERGENCY PREPAREDNESS



THE SCHOOL BOARD OF BROWARD
COUNTY, FLORIDA

THE SCHOOL BOARD OF BROWARD COUNTY, FL
2021-2022 ORGANIZATIONAL CHART

Funding:
Funding from sources other than General Funds
C Capital
FS Food Service
Gr Grant
G General
R Referendum

SUPERINTENDENT OF SCHOOLS

CHIEF SAFETY & SECURITY OFFICER (S)

EXECUTIVE DIRECTOR
Enterprise Risk & Emergency Preparedness (E)

DIRECTOR Risk Management (D)

DIRECTOR School Security Support Services (D)

DIRECTOR Environmental Health & Safety (D) **C**

DIRECTOR Safety & Security Operations (D)

CHIEF Special Investigative Unit (SIU) (D)

CHIEF FIRE OFFICIAL (D) **C**

PAY BANDS 'S' & 'E'

PAY BAND 'D'

BUDGET ANALYST V (C)

SENIOR DATA ANALYST (27)

PROJECT MANAGER Safety, Security & Emergency Preparedness (25)

MANAGER Emergency Management (B)

COORDINATOR School Safety (25)

MANAGER District Security Operations Center (25)

MANAGER Environmental Conservation/Utility Management (27) **C**

PROJECT MANAGER II Guaranteed Energy Performance (26) **C**

SPECIALIST IV Building Control (25) **C**

SPECIALIST Safety Training (25) **C**

COORDINATOR Environmental Compliance (C) **C**

PROJECT MANAGER Occupational Health/Environmental Control (2) (25) **C**

COORDINATOR Health & Safety (B) **C**

AREA MANAGER Security (25) (7)

AREA MANAGER Security (25) (9) **R**

LIEUTENANT (C) (2)

SERGEANT (B)

DETECTIVE SIU (25) (19)

PERSONNEL ADMINISTRATOR Training/Clearance (C)

PLANS EXAMINER/INSPECTOR Fire (25) (4) **C**

ESMAB PAY BANDS 'C' & 'B'
TSP PAY GRADES 25-28

STRATEGY & OPERATIONS



THE SCHOOL BOARD OF BROWARD COUNTY, FL 2021-2022 ORGANIZATIONAL CHART

Funding from sources other than General Funds

Funding:
C Capital **FS** Food Service **Gr** Grant
G General **R** Referendum

THE SCHOOL BOARD OF BROWARD COUNTY, FLORIDA

SUPERINTENDENT OF SCHOOLS

CHIEF STRATEGY & OPERATIONS OFFICER (S)

EXECUTIVE DIRECTOR Strategic Initiative Management (E)

DIRECTOR Demographics & Enrollment Planning (D)

DIRECTOR Grants Administration (D)

DIRECTOR Performance Management (D)

DIRECTOR Program Evaluation (D)

SPECIALIST Demographer/Statistician (27)

SENIOR MANAGER Grant Programs (C)

COORDINATOR Performance Management (C)

COORDINATOR Strategic Management (C)

EVALUATION ADMINISTRATOR (27)

MANAGER Grant Programs Oversight (26)
(2)

GRANTS ADMINISTRATOR Accountability & Reporting (25)

PAY BANDS 'S' & 'E'

PAY BAND 'D'

ESMAB PAY BANDS 'C' & 'B'
TSP PAY GRADES 25-28

STRATEGY & OPERATIONS

THE SCHOOL BOARD OF BROWARD COUNTY, FLORIDA



THE SCHOOL BOARD OF BROWARD COUNTY, FL 2021-2022 ORGANIZATIONAL CHART

Funding from sources other than General Funds

Funding:
C Capital **FS** Food Service **Gr** Grant
G General **R** Referendum

SUPERINTENDENT OF SCHOOLS

CHIEF STRATEGY & OPERATIONS OFFICER (S)

EXECUTIVE DIRECTOR Student Transportation & Fleet Services (E)

PAY BANDS 'S' & 'E'

DIRECTOR Food & Nutrition Services (D)

DIRECTOR Procurement & Warehousing Services (D)

OFFICER Economic Development & Diversity Compliance (D)
C-50%
G-50%

DIRECTOR Student Transportation & Fleet Services (D)

PAY BAND 'D'

ASSISTANT DIRECTOR Food & Nutrition Services (C)

COORDINATOR Food & Nutrition Services (C)
(2)

MANAGER Strategic Sourcing (C)

MANAGER Construction Sourcing (C)

ASSISTANT DIRECTOR Procurement Compliance (C)

MANAGER Supplier Diversity & Outreach Program (C)
C-50%
G-50%

MANAGER ASSISTANT DIRECTOR Transportation Operations Support Services (C)

MANAGER I Transportation Terminal (B)
(2)

MANAGER I Vehicle Maintenance (C)

MANAGER Centralized Routing (C)

AREA SUPERVISOR Food & Nutrition Services (B)
(11)

FINANCE MANAGER Food & Nutrition Services (C)

MANAGER Warehousing Services (B)(C)

PURCHASING AGENT IV Construction (25)

SENIOR PROCESS ANALYST (C)

COORDINATOR Supplier Diversity & Outreach Program (26)

MANAGER II Transportation Terminal (C)
(2)

SUPERVISOR Special Needs Transportation (25)

SUPERVISOR Vehicle Maintenance (25)
(2)

DATA ANALYST Transportation (25)

AREA SUPERVISOR Special Programs Food & Nutrition Services (B)
(2)

PROGRAMMANAGER Nutrition, Education & Training (26)

MANAGER Procurement & Warehousing Services (25)

SENIOR PROCESS ANALYST (C)

COORDINATOR Supplier Diversity & Outreach Program (Compliance) (26)
C-50%
G-50%

ACCOUNTANT V (27)

SUPERVISOR Food & Nutrition Services Information Systems (B)

SUPERVISOR Food & Nutrition Services Equipment & Supplies (25)

PURCHASING AGENT IV (25)