



**THE SCHOOL BOARD OF BROWARD COUNTY, FLORIDA  
2019-2020 ORGANIZATIONAL CHART**

**Approved as Amended: 06/11/2019**

**Pg 14 Revised: 06/25/19**

**Pg 17 Revised: 08/06/2019**

**Pg 10 Revised & Pg 20 Added: 10/02/2019**



# THE SCHOOL BOARD OF BROWARD COUNTY, FLORIDA

## 2019-2020 ORGANIZATIONAL CHART

<b>School Board Appointed Committees &amp; Public Stakeholders</b> .....	<b>1</b>
<b>Superintendent of Schools</b> .....	<b>2</b>
<b>General Counsel</b> .....	<b>3</b>
<b>School Performance &amp; Accountability</b> .....	<b>4</b>
<b>Academics</b> .....	<b>5-7</b>
<b>Learning &amp; Development Support</b> .....	<b>5</b>
<b>Exceptional Student Learning Support</b> .....	<b>6</b>
<b>Student Learning</b> .....	<b>7</b>
<b>Student Support Initiatives &amp; Recovery</b> .....	<b>8</b>
<b>Auditor</b> .....	<b>9</b>
<b>Capital Programs</b> .....	<b>10</b>
<b>Financial Management</b> .....	<b>11</b>
<b>Human Resources &amp; Equity</b> .....	<b>12</b>
<b>Information &amp; Technology</b> .....	<b>13</b>
<b>Portfolio Services</b> .....	<b>14</b>
<b>Communications</b> .....	<b>15</b>
<b>Chief of Staff</b> .....	<b>16</b>
<b>Safety, Security &amp; Emergency Preparedness</b> .....	<b>17</b>
<b>Strategy &amp; Operations</b> .....	<b>18-20</b>
<b>Business Support Center, Grants Administration, Strategic Implementation &amp; Accountability</b> .....	<b>18</b>
<b>Food &amp; Nutrition Services, Procurement &amp; Warehousing Services, Supplier Diversity &amp; Outreach, Student Transportation &amp; Fleet Services</b> .....	<b>19</b>
<b>Physical Plant Operations</b> .....	<b>20</b>



Funding from sources other than General Funds

**C** Capital    **FS** Food Service  
**G** General    **Gr** Grant

### SCHOOL BOARD APPOINTED COMMITTEES & PUBLIC STAKEHOLDERS

### THE SCHOOL BOARD OF BROWARD COUNTY, FL 2019-2020 ORGANIZATIONAL CHART

**BROWARD COUNTY  
COMMUNITY**

**THE SCHOOL BOARD OF  
BROWARD COUNTY, FLORIDA**

#### School Board Appointed Committees

#### School Board Appointed Committees

**Audit Committee**  
**District Advisory Council**  
**Diversity Committee**  
**ESE Advisory Council**  
**Facilities Task Force**

**Gifted Advisory Council**  
**Human Relations Committee**  
**Student Advisor**  
**Supplier Diversity & Outreach Advisory**  
**Technology Advisory Committee**

**SUPERINTENDENT  
OF SCHOOLS**

#### **PUBLIC STAKEHOLDERS**

**Bond Oversight Committee**  
**ESOL Leadership Council**  
**Parent/Community Involvement Task Force**  
**Parent Teacher Association (PTA)**  
**Qual. Selection & Eval. Comm. (QSEC)**  
**Superintendent's Insurance Advisory Committee**  
**Teacher Advisory Council**  
**Wellness & Learning Support Committee**



**THE SCHOOL BOARD OF BROWARD COUNTY, FL  
2019-2020 ORGANIZATIONAL CHART**

**SUPERINTENDENT**

**BROWARD COUNTY  
COMMUNITY**

**THE SCHOOL BOARD OF  
BROWARD COUNTY, FLORIDA**

**GENERAL COUNSEL**

Page 3

**SUPERINTENDENT  
OF SCHOOLS**

**Collective Bargaining Team**

**CHIEF OF STAFF** (S)

Page 16

**DIRECTOR  
Legislative Affairs** (D)

**COORDINATOR  
Governmental Affairs** (27)

**CHIEF  
SAFETY, SECURITY &  
EMERGENCY  
PREPAREDNESS** (S)  
Page 17

**CHIEF SCHOOL  
PERFORMANCE &  
ACCOUNTABILITY  
OFFICER**

Page 4

**CHIEF ACADEMIC  
OFFICER**

Pages 5-7

**CHIEF  
STUDENT SUPPORT  
INITIATIVES**

Page 8

**Recovery Team**

**CHIEF AUDITOR**

Page 9

**EXECUTIVE  
DIRECTOR  
CAPITAL PROGRAMS**

Page 10

**CHIEF FINANCIAL  
OFFICER**

Page 11

**CHIEF HUMAN  
RESOURCES & EQUITY  
OFFICER**

Page 12

**CHIEF  
INFORMATION  
OFFICER**

Page 13

**CHIEF PORTFOLIO  
SERVICES OFFICER**

Page 14

**CHIEF  
COMMUNICATIONS  
OFFICER**

Page 15

**CHIEF STRATEGY &  
OPERATIONS OFFICER**

Pages 18-19

Funding from  
sources other than  
General Funds

- C** Capital    **FS** Food Service
- G** General    **Gr** Grant

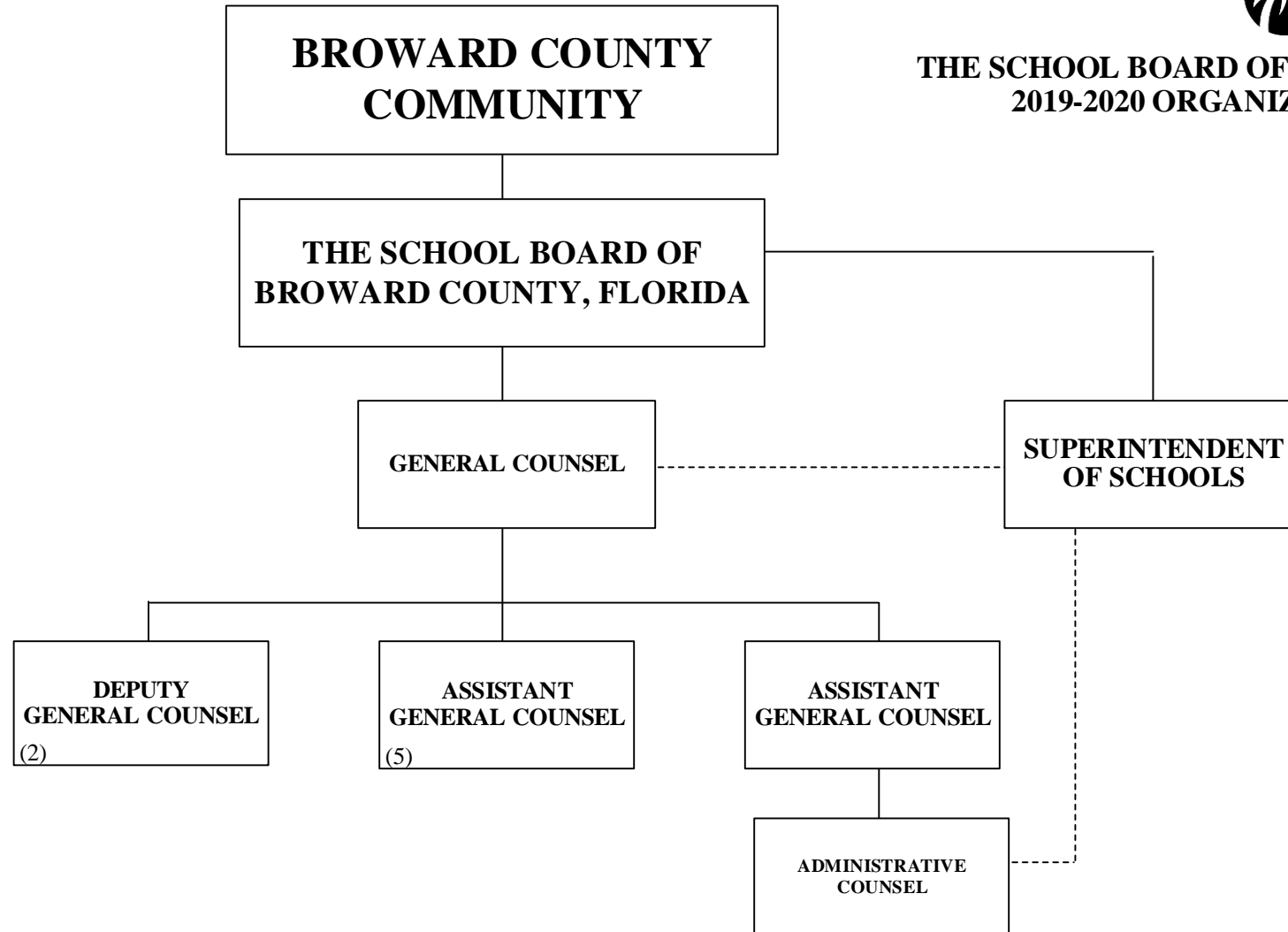
**GENERAL COUNSEL**



**THE SCHOOL BOARD OF BROWARD COUNTY, FL  
2019-2020 ORGANIZATIONAL CHART**

Funding from sources other than General Funds

- C** Capital    **FS** Food Service
- G** General    **Gr** Grant



Funding from sources other than General Funds

**C** Capital    **FS** Food Service  
**G** General    **Gr** Grant



# SCHOOL PERFORMANCE & ACCOUNTABILITY OSPA

THE SCHOOL BOARD OF BROWARD COUNTY, FL  
2019-2020 ORGANIZATIONAL CHART

THE SCHOOL BOARD OF BROWARD COUNTY, FLORIDA

SUPERINTENDENT OF SCHOOLS

CHIEF SCHOOL PERFORMANCE & ACCOUNTABILITY OFFICER (S)

PAY BANDS 'S' & 'E'

DIRECTOR Coaching & Induction (D)

DIRECTOR SERVICE QUALITY (D)

DIRECTOR, SCHOOL PERFORMANCE & ACCOUNTABILITY (D)  
(12)

DIRECTOR, SCHOOL PERFORMANCE & ACCOUNTABILITY (D)  
(3)

DIRECTOR Leadership Development (D)

DIRECTOR Teacher Professional Learning & Growth (D)

DIRECTOR Professional Development Standards & Support (D)

PRINCIPAL COACH (BPAA)

PRINCIPALS LEVELS/ZONES

PRINCIPAL COACH (BPAA)

SUPERVISOR Coaching & Induction (C)  
(2)

COORDINATOR School Improvement (C)

SUPERVISOR Leadership Development (C)  
(2)

SUPERVISOR Teacher Professional Learning & Growth (C)  
(2)

SUPERVISOR Professional Development Standards & Support (C)  
G-77%  
Gr-23%

ASSISTANT DIRECTOR ADMINISTRATION (C)  
(4)

COORDINATOR Leadership Development (C)

COORDINATOR Teacher Support (C)  
(27)

RESEARCH SPECIALIST (C)  
(27)

PROCESS ANALYST Professional Development (C)  
(25)

PAY BAND 'D'

PAY BANDS 'C' & 'B'

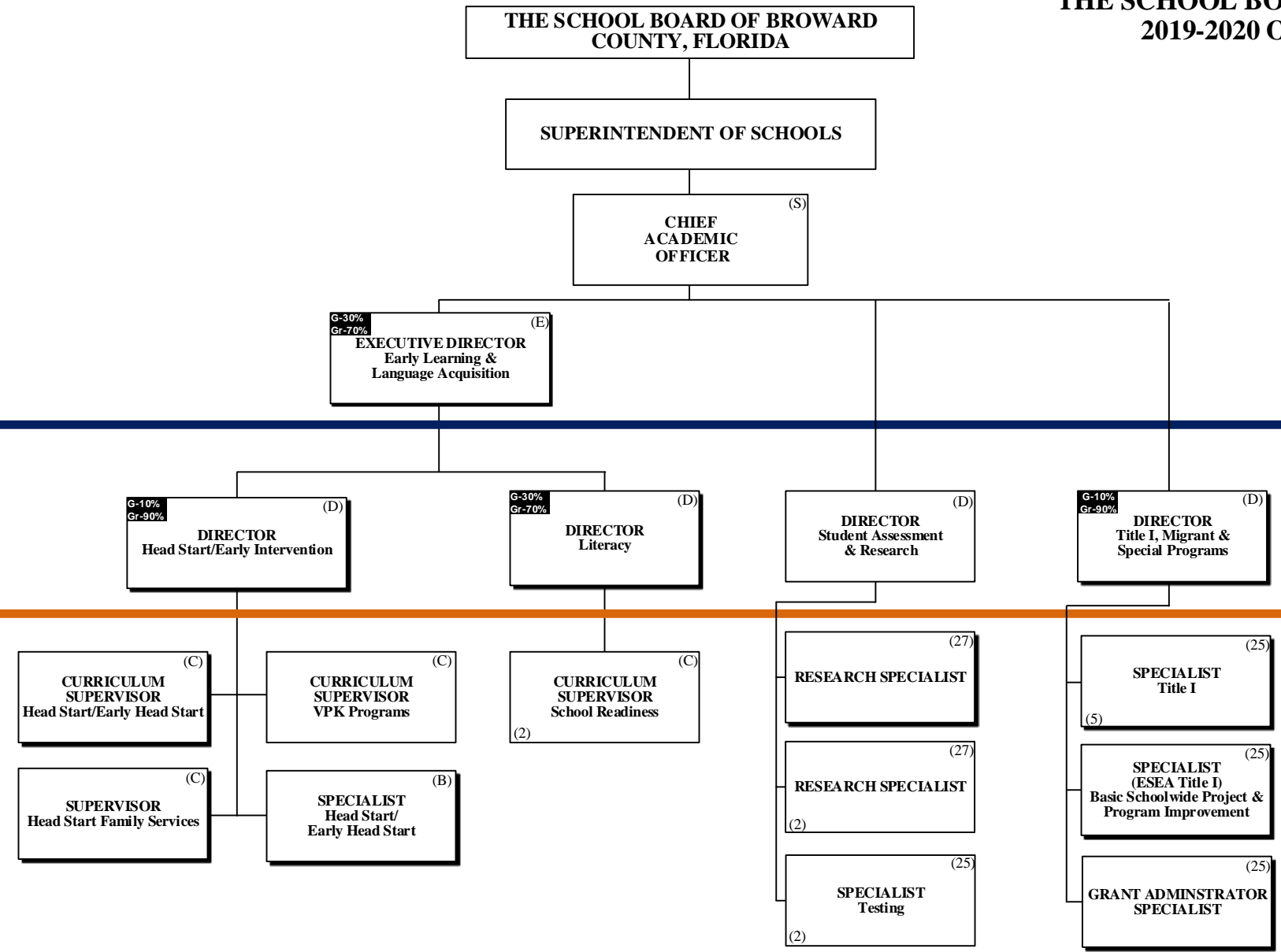
Funding from sources other than General Funds

**C** Capital    **FS** Food Service  
**G** General    **Gr** Grant

# ACADEMICS LEARNING & DEVELOPMENT SUPPORT



THE SCHOOL BOARD OF BROWARD COUNTY, FL  
2019-2020 ORGANIZATIONAL CHART



PAY BANDS 'S' & 'E'

PAY BAND 'D'

PAY BANDS 'C' & 'B'

# ACADEMICS EXCEPTIONAL STUDENT LEARNING SUPPORT



**THE SCHOOL BOARD OF BROWARD COUNTY, FL  
2019-2020 ORGANIZATIONAL CHART**

Funding from sources other than General Funds

**C** Capital    **FS** Food Service  
**G** General    **Gr** Grant

**THE SCHOOL BOARD OF BROWARD COUNTY, FLORIDA**

**SUPERINTENDENT OF SCHOOLS**

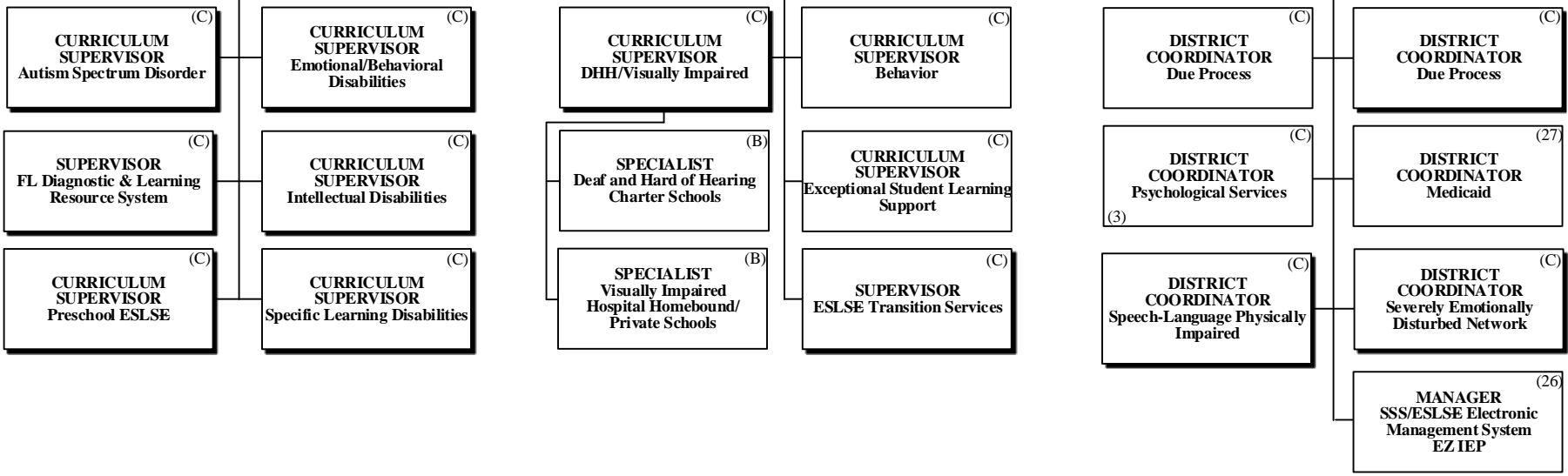
**CHIEF ACADEMIC OFFICER** <sup>(S)</sup>

**EXECUTIVE DIRECTOR**  
Exceptional Student Learning Support <sup>(E)</sup>

PAY BANDS 'S' & 'E'

**DIRECTOR** <sup>(D)</sup> Exceptional Student Learning Support (Pre-K/Elementary)   
 **DIRECTOR** <sup>(D)</sup> Exceptional Student Learning Support (Secondary)   
 **DIRECTOR** <sup>(D)</sup> Exceptional Student Learning Support Services

PAY BAND 'D'



PAY BANDS 'C' & 'B'



Funding from sources other than General Funds

**C** Capital    **FS** Food Service  
**G** General    **Gr** Grant

# ACADEMICS STUDENT LEARNING



THE SCHOOL BOARD OF BROWARD COUNTY, FLORIDA

## THE SCHOOL BOARD OF BROWARD COUNTY, FL 2019-2020 ORGANIZATIONAL CHART

SUPERINTENDENT OF SCHOOLS

CHIEF ACADEMIC OFFICER (S)

PAY BANDS 'S' & 'E'

DIRECTOR (D)  
Elementary Learning

DIRECTOR (D)  
Secondary Learning

DIRECTOR (D)  
Innovative Learning

DIRECTOR (D)  
Applied Learning

DIRECTOR (D)  
Career, Technical, Adult,  
Community Education

DIRECTOR (D)  
Bilingual/ESOL

PAY BAND 'D'

CURRICULUM SUPERVISOR (C)  
Language Arts (2)

CURRICULUM SUPERVISOR (C)  
Language Arts (2)

CURRICULUM SUPERVISOR (C)  
Library Media

CURRICULUM SUPERVISOR (C)  
Physical Education & Educational Programs

CURRICULUM SUPERVISOR (C)  
Music & Performing Arts

CURRICULUM SUPERVISOR (C)  
Business Technology

CURRICULUM SUPERVISOR (C)  
Educational Leadership

EDUCATION SPECIALIST I (25)  
ESOL (2)

G-27%  
Gr-76%  
CURRICULUM SUPERVISOR (C)  
Bilingual/ESOL

CURRICULUM SUPERVISOR (C)  
Math (2)

CURRICULUM SUPERVISOR (C)  
Math (2)

CURRICULUM SUPERVISOR (C)  
Gifted & Talented

CURRICULUM SUPERVISOR (C)  
STEM+C

CURRICULUM SUPERVISOR (C)  
Art

CURRICULUM SUPERVISOR (C)  
Health Science

CURRICULUM SUPERVISOR (C)  
Family & Consumer Science

EDUCATION SPECIALIST I (25)  
Dual Language/World Language

CURRICULUM SUPERVISOR (C)  
World Languages

CURRICULUM SUPERVISOR (C)  
Science

CURRICULUM SUPERVISOR (C)  
Science

PROJECT MANAGER (27)  
Technology & Instruction

CURRICULUM SUPERVISOR (C)  
Humanities

CURRICULUM SUPERVISOR (C)  
Technical Education/  
Agriculture

CURRICULUM SUPERVISOR (C)  
Vocational Education  
Industrial

SPECIALIST (25)  
Bilingual Outreach Program

G-50%  
Gr-50%  
RESEARCH SPECIALIST (27)

CURRICULUM SUPERVISOR (C)  
Social Studies

CURRICULUM SUPERVISOR (C)  
Social Studies

ANALYST (25)  
Training

ANALYST (25)  
Instructional & Digital  
Material

PAY BANDS 'C' & 'B'

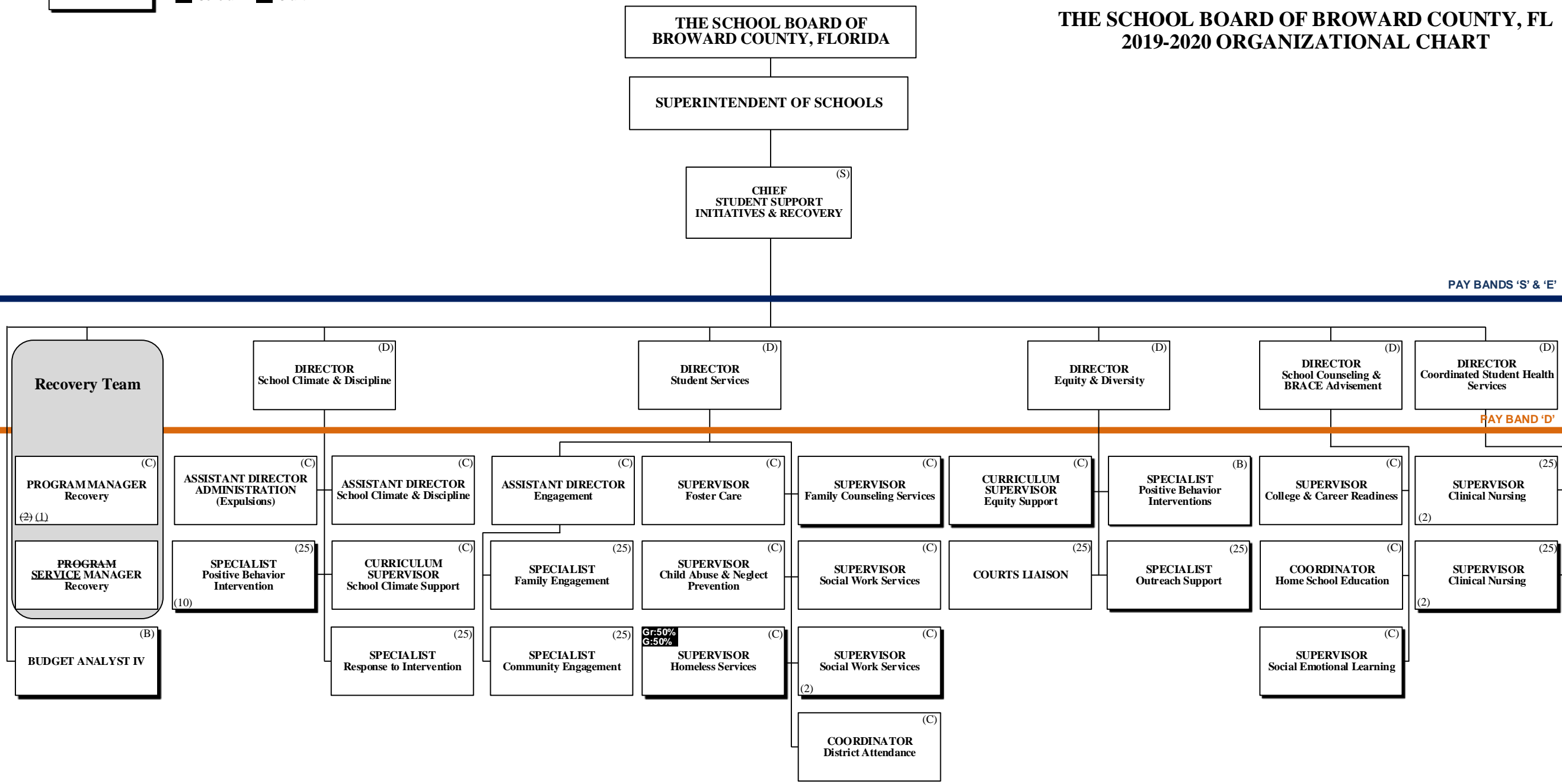
Funding from sources other than General Funds

**C** Capital    **FS** Food Service  
**G** General    **Gr** Grant

# STUDENT SUPPORT INITIATIVES & RECOVERY



THE SCHOOL BOARD OF BROWARD COUNTY, FL  
 2019-2020 ORGANIZATIONAL CHART



PAY BANDS 'S' & 'E'

PAY BAND 'D'

PAY BANDS 'C' & 'B'

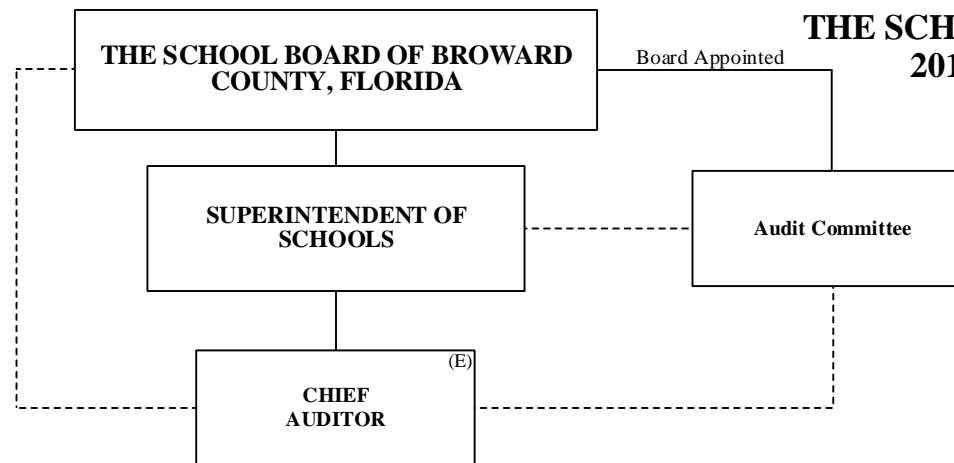


# AUDITOR

## THE SCHOOL BOARD OF BROWARD COUNTY, FL 2019-2020 ORGANIZATIONAL CHART

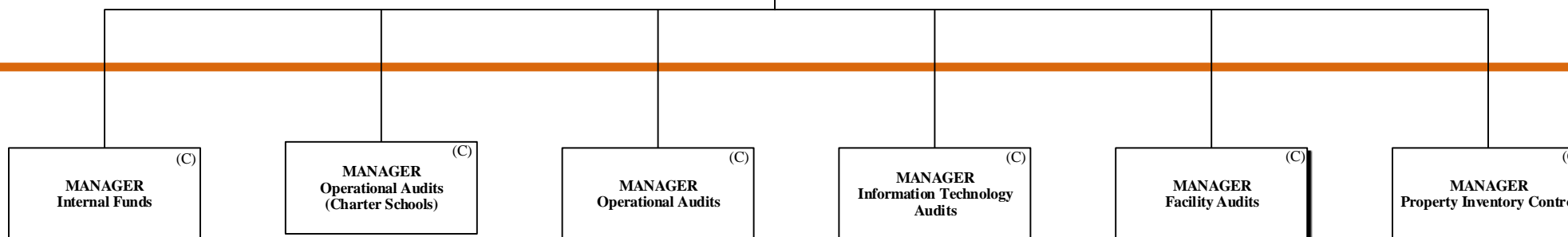
Funding from sources other than General Funds

- C** Capital
- FS** Food Service
- G** General
- Gr** Grant



PAY BANDS 'S' & 'E'

PAY BAND 'D'



PAY BANDS 'C' & 'B'

# CAPITAL PROGRAMS

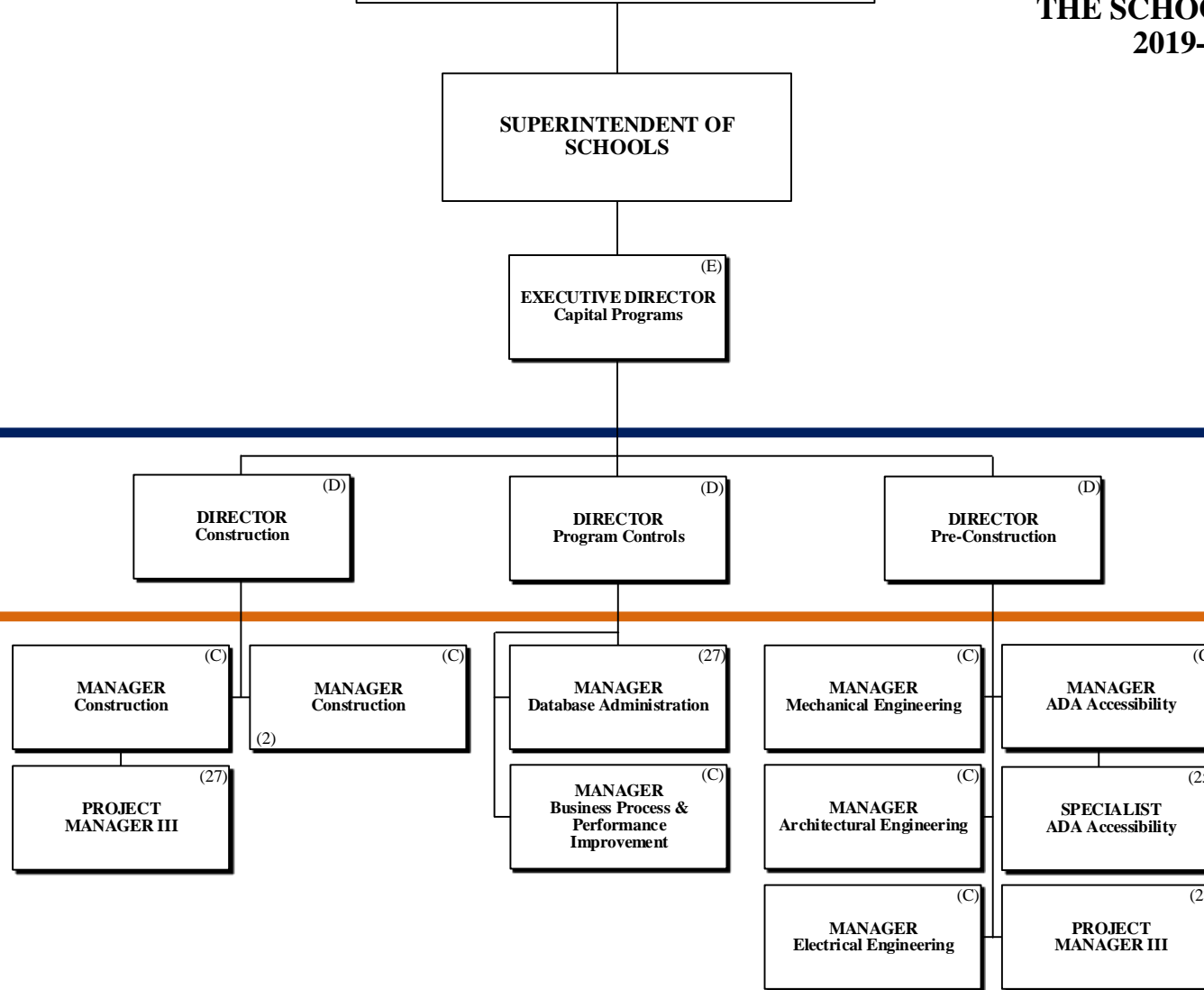


## THE SCHOOL BOARD OF BROWARD COUNTY, FL 2019-2020 ORGANIZATIONAL CHART

Funding from sources other than General Funds

- C** Capital    **FS** Food Service
- G** General    **Gr** Grant

THE SCHOOL BOARD OF BROWARD COUNTY, FLORIDA



PAY BANDS 'S' & 'E'

PAY BAND 'D'

Board Approved: 06/11/2019  
Revised: 10/02/2019

ESMAB PAY BANDS 'C' & 'B'  
TSP PAY GRADES 25-28

Funding from sources other than General Funds

**C** Capital    **FS** Food Service  
**G** General    **Gr** Grant

# FINANCIAL MANAGEMENT

THE SCHOOL BOARD OF BROWARD COUNTY, FLORIDA

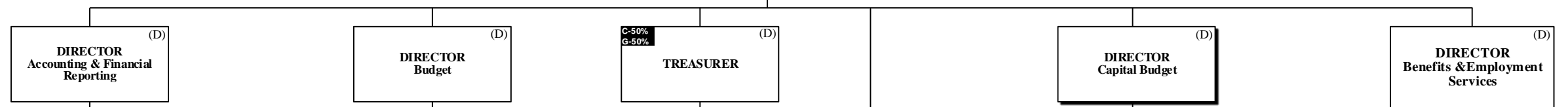


## THE SCHOOL BOARD OF BROWARD COUNTY, FL 2019-2020 ORGANIZATIONAL CHART

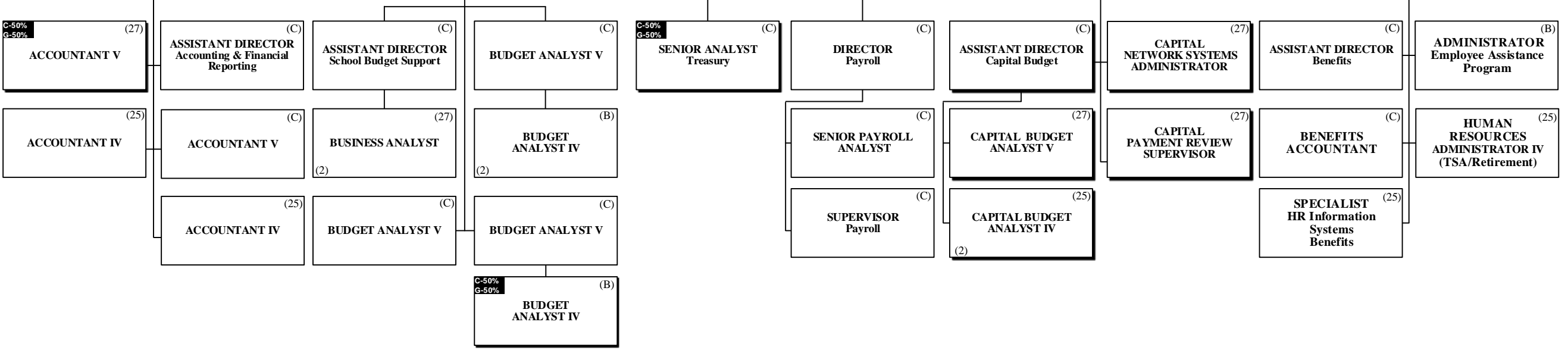
SUPERINTENDENT OF SCHOOLS

**C-20%**  
**G-80%** (S)  
CHIEF FINANCIAL OFFICER (CFO)

PAY BANDS 'S' & 'E'



PAY BAND 'D'



ESMAB PAY BANDS 'C' & 'B'  
TSP PAY GRADES 25-28

# HUMAN RESOURCES & EQUITY

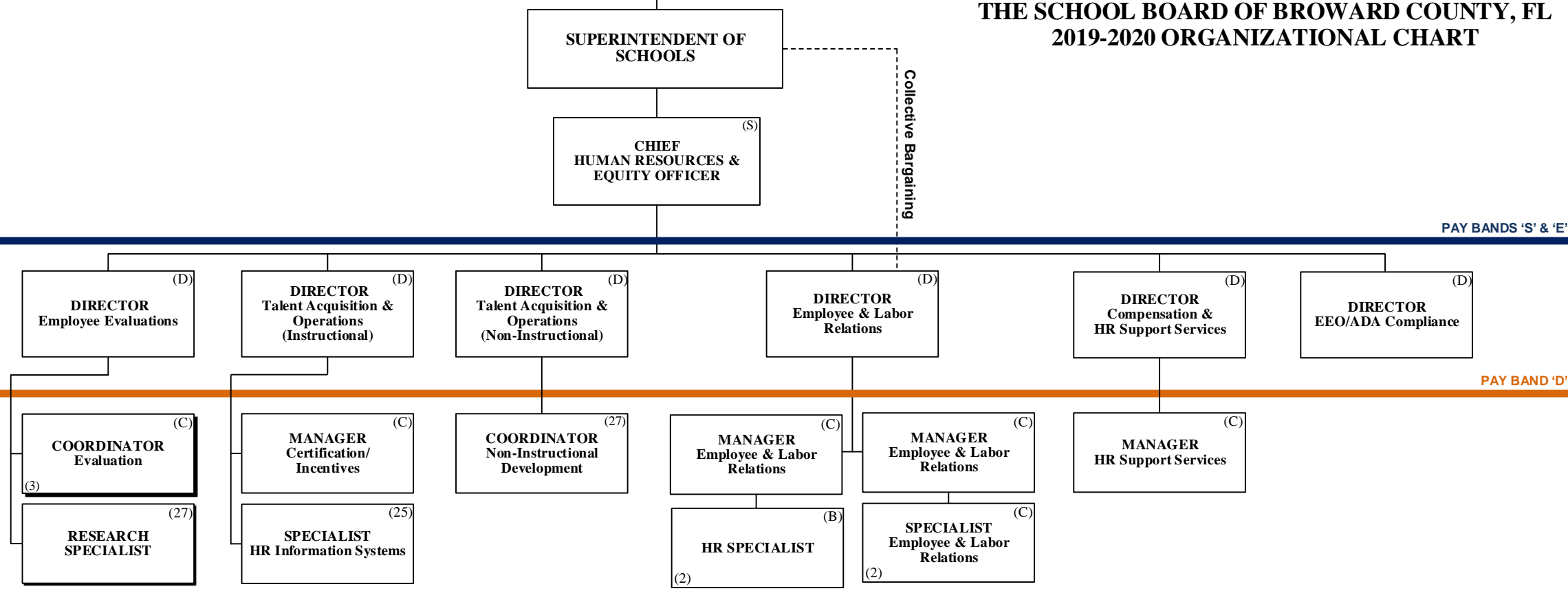
THE SCHOOL BOARD OF BROWARD COUNTY, FLORIDA



THE SCHOOL BOARD OF BROWARD COUNTY, FL  
2019-2020 ORGANIZATIONAL CHART

Funding from sources other than General Funds

- C** Capital    **FS** Food Service
- G** General    **Gr** Grant



ESMAB PAY BANDS 'C' & 'B'  
TSP/PBA PAY GRADES 25-28



# INFORMATION & TECHNOLOGY

## THE SCHOOL BOARD OF BROWARD COUNTY, FL 2019-2020 ORGANIZATIONAL CHART

Funding from sources other than General Funds	<b>C</b> Capital	<b>FS</b> Food Service
sources other than General Funds	<b>G</b> General	<b>Gr</b> Grant
New Position Job Description Does Not Exist	<b>N</b> New Position Job Description Exists	<b>R</b> Reporting Change from Different Division
Revision to Existing Job Description/Title Change	<b>A</b> Alignment Change within same Division	

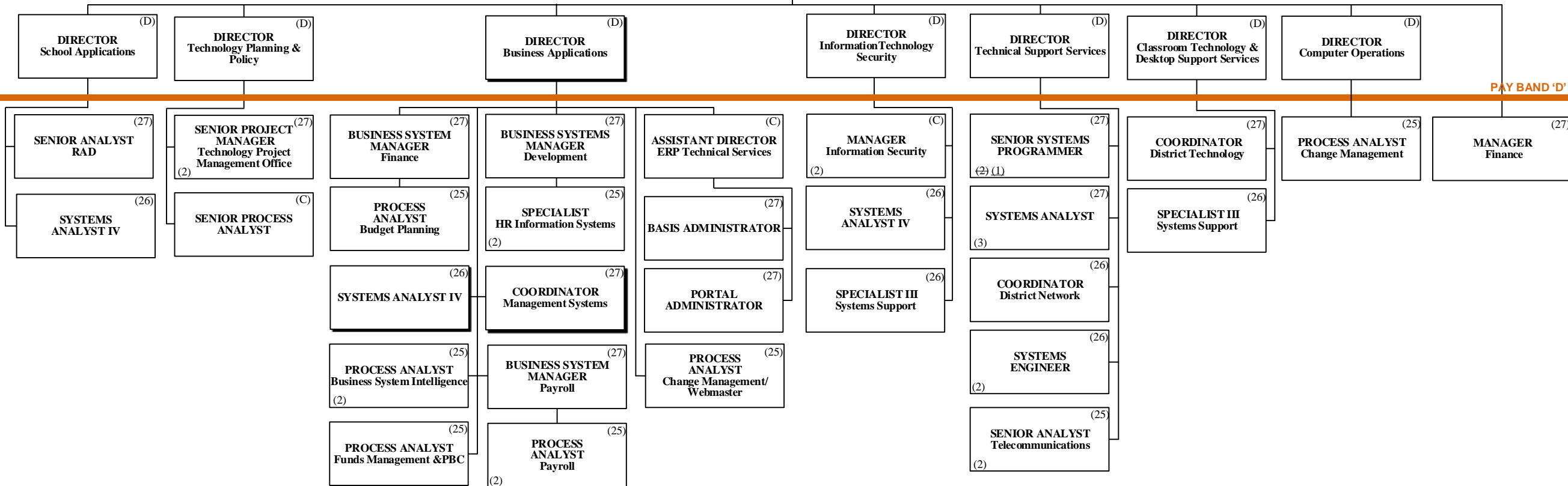
Funding: **C** Capital **FS** Food Service Direct Report  
**G** General **Gr** Grant Indirect Report

THE SCHOOL BOARD OF BROWARD COUNTY, FLORIDA

SUPERINTENDENT OF SCHOOLS

CHIEF INFORMATION OFFICER (S)

PAY BANDS 'S' & 'E'



PAY BAND 'D'

ESMAB PAY BANDS 'C' & 'B'  
TSP PAY GRADES 25-28

Funding from sources other than General Funds

**C** Capital    **FS** Food Service  
**G** General    **Gr** Grant

### PORTFOLIO SERVICES

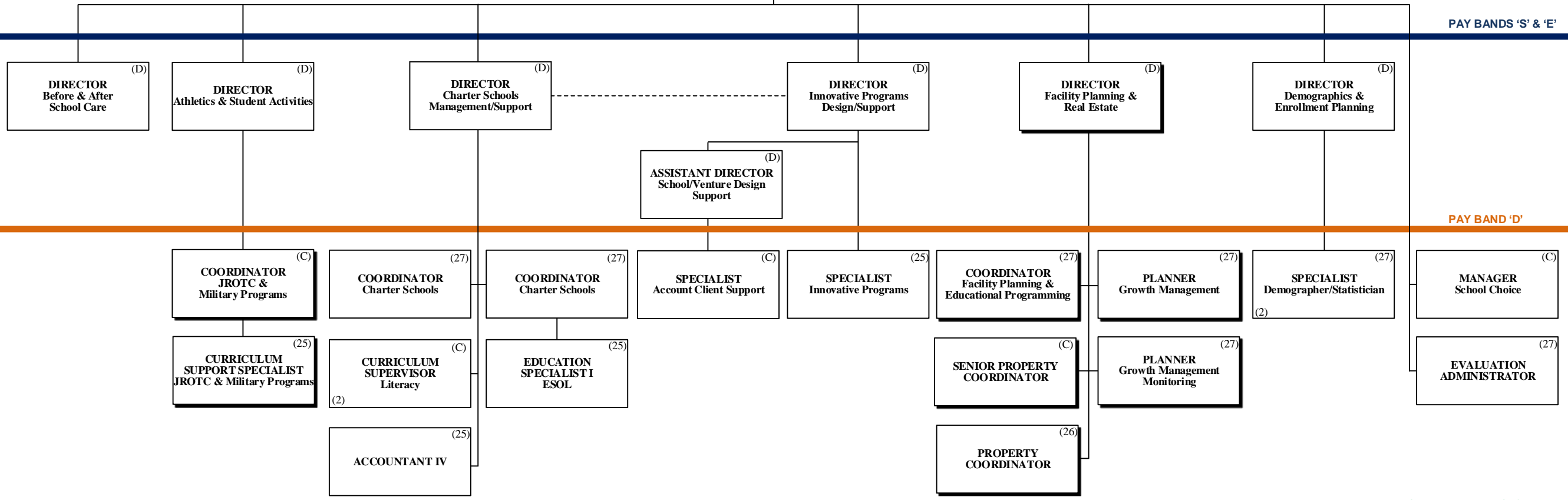


## THE SCHOOL BOARD OF BROWARD COUNTY, FL 2019-2020 ORGANIZATIONAL CHART

THE SCHOOL BOARD OF BROWARD COUNTY, FLORIDA

SUPERINTENDENT OF SCHOOLS

CHIEF PORTFOLIO SERVICES OFFICER (E)



PAY BANDS 'S' & 'E'

PAY BAND 'D'

ESMAB PAY BANDS 'C' & 'B'  
TSP PAY GRADES 25-28



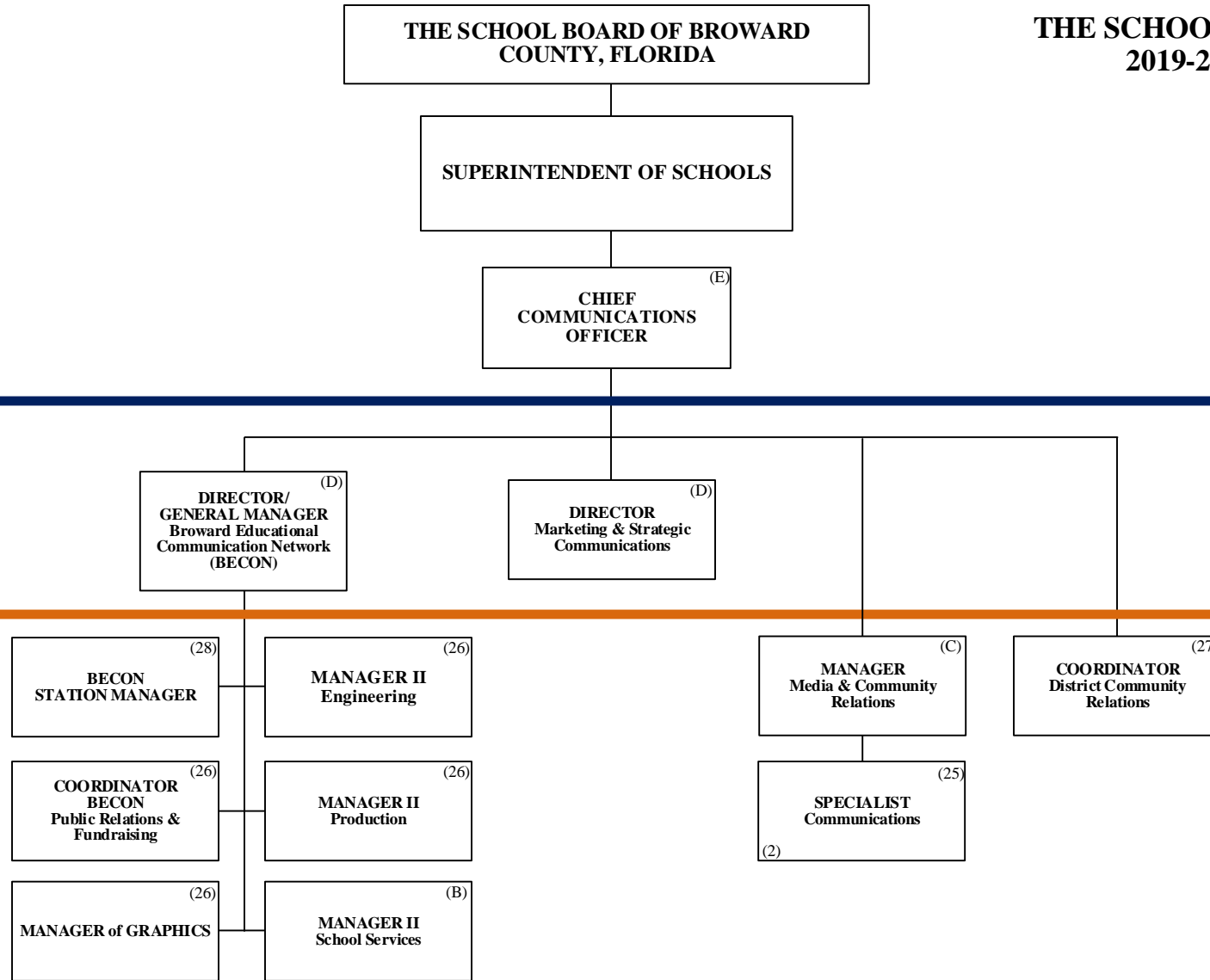
Funding from sources other than General Funds

**C** Capital    **FS** Food Service  
**G** General    **Gr** Grant



# COMMUNICATIONS

## THE SCHOOL BOARD OF BROWARD COUNTY, FL 2019-2020 ORGANIZATIONAL CHART



PAY BANDS 'S' & 'E'

PAY BAND 'D'

ESMAB PAY BANDS 'C' & 'B'  
TSP PAY GRADES 25-28

**CHIEF OF STAFF**



**THE SCHOOL BOARD OF BROWARD COUNTY, FL  
2019-2020 ORGANIZATIONAL CHART**

Funding from sources other than General Funds

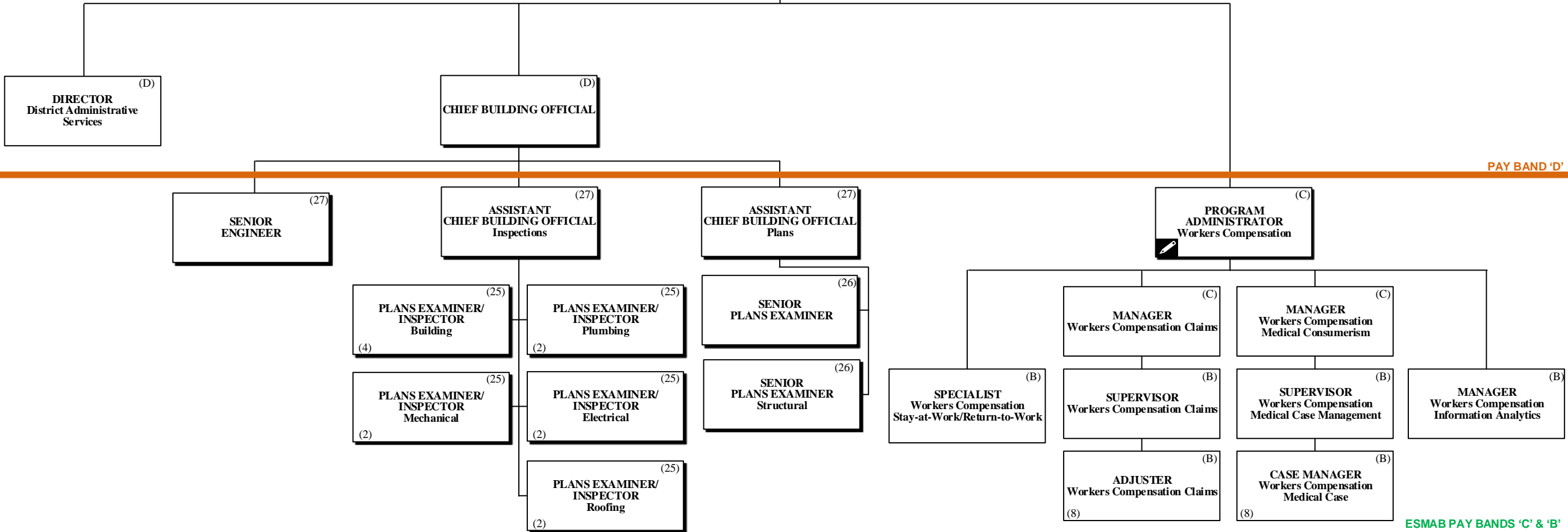
**C** Capital    **FS** Food Service  
**G** General    **Gr** Grant

**THE SCHOOL BOARD OF BROWARD COUNTY, FLORIDA**

**SUPERINTENDENT OF SCHOOLS**

**CHIEF OF STAFF (S)**

PAY BANDS 'S' & 'E'



PAY BAND 'D'

ESMAB PAY BANDS 'C' & 'B'  
TSP PAY GRADES 25-28

# SAFETY, SECURITY & EMERGENCY PREPAREDNESS



**THE SCHOOL BOARD OF BROWARD COUNTY, FLORIDA**

**THE SCHOOL BOARD OF BROWARD COUNTY, FL  
2019-2020 ORGANIZATIONAL CHART**

SUPERINTENDENT OF SCHOOLS

CHIEF <sup>(S)</sup>  
SAFETY, SECURITY &  
EMERGENCY  
PREPAREDNESS  
OFFICER

EXECUTIVE DIRECTOR <sup>(E)</sup>  
Enterprise Risk &  
Emergency Preparedness

PAY BANDS 'S' & 'E'

DIRECTOR <sup>(D)</sup>  
Risk Management

DIRECTOR <sup>(D)</sup>  
Environmental Health & Safety

DIRECTOR <sup>(D)</sup>  
Safety & Security Operations

CHIEF <sup>(D)</sup>  
Special Investigative Unit (SIU)

CHIEF FIRE OFFICIAL <sup>(D)</sup>

PAY BAND 'D'

MANAGER <sup>(B)</sup>  
Emergency Management

PERSONNEL ADMINISTRATOR <sup>(C)</sup>  
Training/Clearance

MANAGER <sup>(27)</sup>  
Environmental Conservation/  
Utility Management

COORDINATOR <sup>(C)</sup>  
Local Education Agency (LEA)

AREA MANAGER <sup>(25)</sup>  
Security  
(7)

LIEUTENANT <sup>(C)</sup>  
(2)

DETECTIVE <sup>(25)</sup>  
DISTRICT LIAISON  
School Resource Officers

PLANS EXAMINER/  
INSPECTOR <sup>(25)</sup>  
Fire  
(3)

SENIOR DATA ANALYST <sup>(25)</sup>

COORDINATOR <sup>(25)</sup>  
School Safety

SPECIALIST IV <sup>(25)</sup>  
Building Control

PROJECT MANAGER <sup>(25)</sup>  
Occupational Health/  
Environmental Control

AREA MANAGER <sup>(25)</sup>  
Security  
(7)

DETECTIVE <sup>(25)</sup>  
SIU  
(18)

SPECIALIST <sup>(25)</sup>  
Safety Training

PROJECT MANAGER I <sup>(25)</sup>

COORDINATOR <sup>(B)</sup>  
Health & Safety

ESMAB PAY BANDS 'C' & 'B'  
TSP PAY GRADES 25-28

# STRATEGY & OPERATIONS

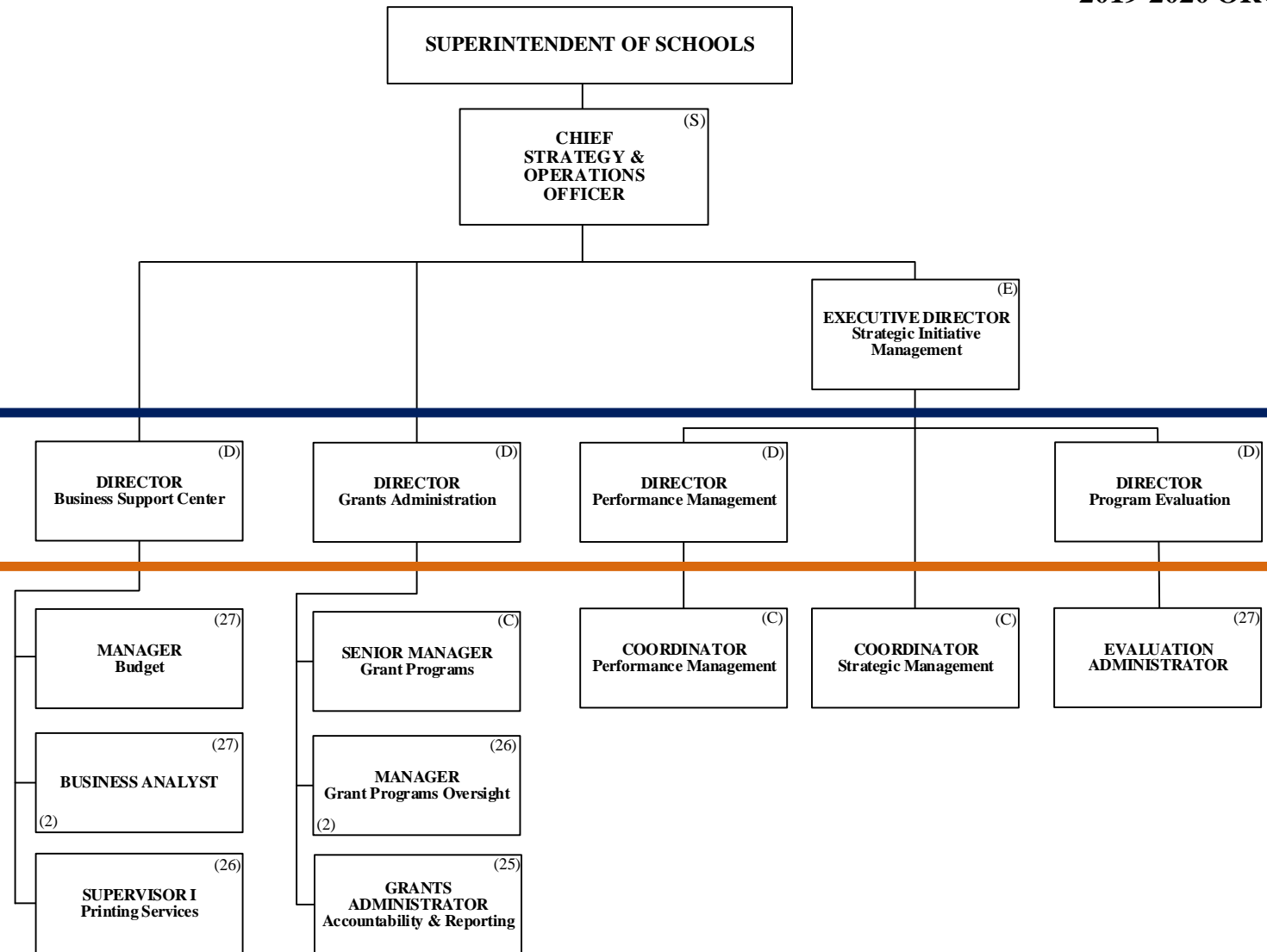


## THE SCHOOL BOARD OF BROWARD COUNTY, FL 2019-2020 ORGANIZATIONAL CHART

Funding from sources other than General Funds

- C** Capital    **FS** Food Service
- G** General    **Gr** Grant

THE SCHOOL BOARD OF BROWARD COUNTY, FLORIDA



PAY BANDS 'S' & 'E'

PAY BAND 'D'

Board Approved: 06/11/2019  
Revised: 10/02/2019

ESMAB PAY BANDS 'C' & 'B'  
TSP PAY GRADES 25-28

Funding from sources other than General Funds

**C** Capital    **FS** Food Service  
**G** General    **Gr** Grant

# STRATEGY & OPERATIONS

THE SCHOOL BOARD OF BROWARD COUNTY, FLORIDA



## THE SCHOOL BOARD OF BROWARD COUNTY, FL 2019-2020 ORGANIZATIONAL CHART

SUPERINTENDENT OF SCHOOLS

CHIEF STRATEGY & OPERATIONS OFFICER (S)

EXECUTIVE DIRECTOR Student Transportation & Fleet Services (E)

PAY BANDS 'S' & 'E'

DIRECTOR Food & Nutrition Services (D)

DIRECTOR Procurement & Warehousing Services (D)

OFFICER Economic Development & Diversity Compliance (D)  
C-50% G-50%

DIRECTOR Student Transportation & Fleet Services (E, D)

PAY BAND 'D'

ASSISTANT DIRECTOR Food & Nutrition Services (C)

COORDINATOR Food & Nutrition Services (C)

ASSISTANT DIRECTOR Procurement Compliance (C)

MANAGER Warehousing Services (B)

MANAGER Supplier Diversity & Outreach Program (C)  
C-50% G-50%

ASSISTANT DIRECTOR Transportation Support Services (C)

MANAGER I Transportation Terminal (B)  
(2)

MANAGER I Vehicle Maintenance (C)

MANAGER Centralized Routing (C)

AREA SUPERVISOR Food & Nutrition Services (B)  
(11)

FINANCE MANAGER Food & Nutrition Services (C)

MANAGER Strategic Sourcing (C)

MANAGER Construction Sourcing (C)

SENIOR PROCESS ANALYST (C)

COORDINATOR Supplier Diversity & Outreach Program (26)

MANAGER II Transportation Terminal (C)  
(2)

SUPERVISOR Special Needs Transportation (25)

SUPERVISOR Vehicle Maintenance (25)  
(2)

DATA ANALYST Transportation (25)

AREA SUPERVISOR Special Programs Food & Nutrition Services (B)  
(2)

PROGRAM MANAGER Nutrition, Education & Training (26)

PURCHASING AGENT IV (25)

PURCHASING AGENT IV Construction (25)

SENIOR PROCESS ANALYST (C)

COORDINATOR Supplier Diversity & Outreach Program (Compliance) (26)  
C-50% G-50%

ACCOUNTANT V (27)

SUPERVISOR Food & Nutrition Services Information Systems (B)

SUPERVISOR Food & Nutrition Services Equipment & Supplies (25)

PROCESS ANALYST Procurement & Warehousing Services (25)  
(2)

Board Approved: 06/11/2019  
 Revised: 10/02/2019

ESMAB PAY BANDS 'C' & 'B'  
 TSP PAY GRADES 25-28



**THE SCHOOL BOARD OF BROWARD COUNTY, FL  
2019-2020 ORGANIZATIONAL CHART**

Funding from sources other than General Funds

**C** Capital    **FS** Food Service  
**G** General    **Gr** Grant

**STRATEGY & OPERATIONS**

**THE SCHOOL BOARD OF BROWARD COUNTY, FLORIDA**

**SUPERINTENDENT OF SCHOOLS**

**CHIEF STRATEGY & OPERATIONS OFFICER** (S)

**EXECUTIVE DIRECTOR**  
Physical Plant  
Operations (E)

PAY BANDS 'S' & 'E'

**DIRECTOR**  
Physical Plant  
Operations (D)  
C-70%  
G-30%

PAY BAND 'D'

**MANAGER**  
Custodial/Grounds (C)  
C-55%  
G-45%

**MANAGER**  
Grounds (26)  
C-55%  
G-45%

**AREA MANAGER**  
Trades  
Zone 1 (C)  
C-70%  
G-30%

**AREA MANAGER**  
Trades  
Zone 2 (C)  
C-70%  
G-30%

**AREA MANAGER**  
Trades  
Zone 3 (C)  
C-70%  
G-30%

**AREA MANAGER**  
Trades  
District (C)  
C-70%  
G-30%

**TRADE SUPERVISOR** (25)  
(9)

**MANAGER**  
Facilities Support Services (C)

**SUPERVISOR**  
Work Flow/Labor Utilization (25)  
C-55%  
G-45%

**SUPERVISOR**  
Planning & Scheduling (25)  
C-55%  
G-45%

**MANAGER**  
PPO Finance (C)

ESMAB PAY BANDS 'C' & 'B'  
TSP PAY GRADES 25-28